



**Guide Price**  
**£460,000**

**Freehold**

3x  2x  1x 

**The Street, Eythorne,  
Dover, Kent, CT15**

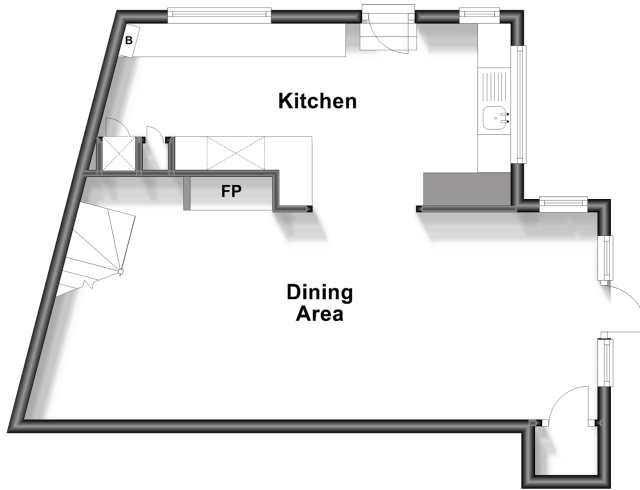
**OVER 60?**

Secure this property  
for up to **59% less!**

*Wards*  
Helping you move forwards

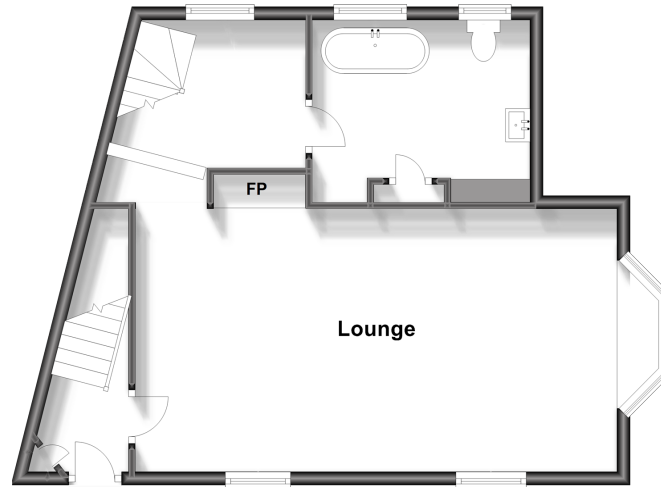
### Lower Ground Floor

Approx. 44.0 sq. metres (473.9 sq. feet)



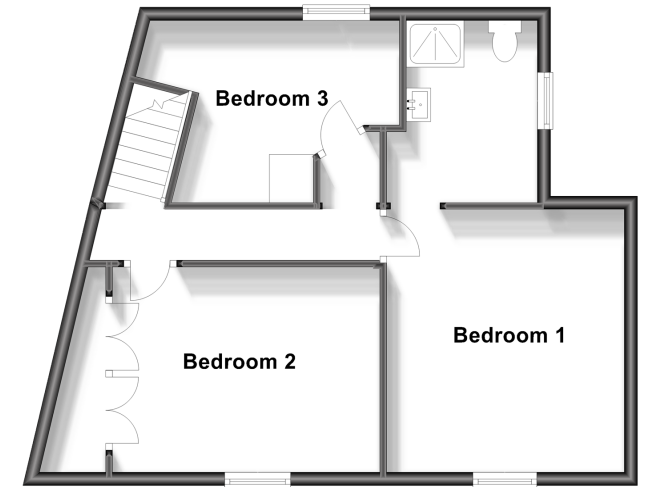
### Split Level Ground Floor

Approx. 51.0 sq. metres (549.5 sq. feet)



### First Floor

Approx. 50.7 sq. metres (545.5 sq. feet)



## Accommodation

### LOWER GROUND FLOOR

Kitchen: 19'2 x 6'9 (5.85m x 2.06m)

Dining Area : 23'5 x 9'8 (7.14m x 2.95m)

### SPLIT LEVEL GROUND FLOOR

Entrance Hall

Lounge : 24'7 x 12'9 (7.50m x 3.89m)

Bathroom : 10'6 x 7'3 (3.20m x 2.21m)

### FIRST FLOOR

Landing

Bedroom 1: 13'2 x 11'1 (4.02m x 3.38m)

En-Suite Shower Room: 9'8 x 5'8 (2.95m x 1.73m)

Bedroom 2: 16'1 x 10'9 (4.91m x 3.28m)

Bedroom 3 : 10'4 x 10'2 (3.15m x 3.10m)

### OUTSIDE

Rear Garden

Off Street Parking



### Main features

- Beautifully presented grade II listed period family home
- Arranged over three floors and inclusive of off street parking
- Move in without lifting a finger with a stunning kitchen and bathroom
- Village of Eythorne has a shop, church and a pub
- Fantastic access to A256

### Nearest Schools

Primary Schools: Eythorne Elvington Community Primary 0.8 miles, Sibertswold C of E Primary at Shepherdswell 2.5 miles, Lydden Primary 2.9 miles  
Secondary Schools: Dover Christchurch Academy 4.1 miles, Learning Opportunities Centre Secondary 4.7 miles,

### Transport Information

Train Stations: Shepherdswell 2.3 miles, Martin Mill 3.9 miles, Kearsney 4.7 miles

### Address

The Street, Eythorne, Dover, Kent, CT15

### Directions

For directions to this property please contact us.



*Wards*  
Helping you move forwards

Call Dover Branch 01304 214876 ■ [wardsofkennt.co.uk](http://wardsofkennt.co.uk)



- Legal advice should be taken to verify fixtures/fittings, planning, alterations and/or lease details
- Appliances & services are untested, dimensions are approximate and floor plans are not to scale
- Through a Homewise Home For Life Plan people aged 60+ can secure this property for up to 59% less, by purchasing a Lifetime Lease.

EPC RATING

CURRENT: D(66) POTENTIAL: B(85)

10732667/20240325/TT/OV