



**Guide Price**  
**£275,000**

**Freehold**

3x  1x  1x 

**Forelands Square, Deal,  
Kent, CT14**

**OVER 60?**

Secure this property  
for up to **59% less!**

*Wards*  
Helping you move forwards





## Main features

- Off road parking and garage
- Close to schools and transport links
- Quiet location and ready to move into
- Potential to extend to the rear (subject to relevant permissions)
- Situated within a short distance to High street and sea front

## Accommodation

### GROUND FLOOR

Porch : 7'11 x 7'5 (2.41m x 2.26m)  
Lounge : 14'6 x 11'11 (4.42m x 3.63m)  
Kitchen/Diner: 17'6 x 7'8 (5.34m x 2.34m)

### FIRST FLOOR

Landing  
Bedroom 3: 7'11 x 7'8 (2.41m x 2.34m)  
Bedroom 1: 10'11 x 9'8 (3.33m x 2.95m)  
Bedroom 2: 10'5 x 9'0 (3.18m x 2.75m)  
Bathroom

### OUTBUILDING

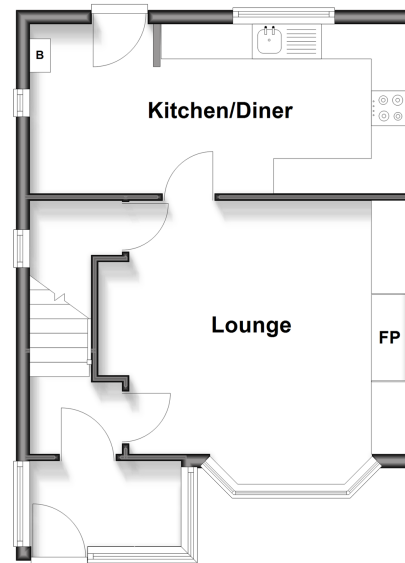
Garage

### OUTSIDE

Off road Parking  
Front and Rear Gardens

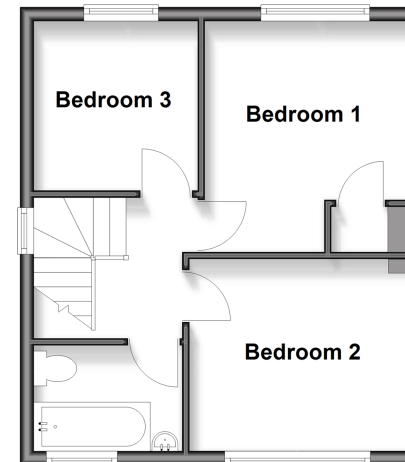
### Ground Floor

Approx. 36.7 sq. metres (394.5 sq. feet)



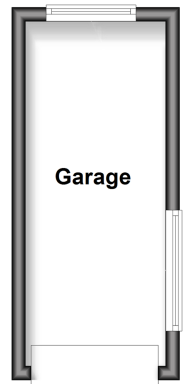
### First Floor

Approx. 33.4 sq. metres (359.9 sq. feet)



### Outbuilding

Approx. 10.0 sq. metres (107.7 sq. feet)



**Call Deal - 01304 361420 ■ wardsofkent.co.uk**

■ Legal advice should be taken to verify fixtures/fittings, planning, alterations and/or lease details  
■ Through a Homewise Home For Life Plan people aged 60+ can secure this property for up to 50% less, by purchasing a Lifetime Lease.

■ Appliances & services are untested, dimensions are approximate and floor plans are not to scale



10635286/20251008/LB1/WSM