



Price

£600,000

Freehold

4x  3x  3x 

**Cavalry Court, Walmer,
Deal, Kent, CT14**

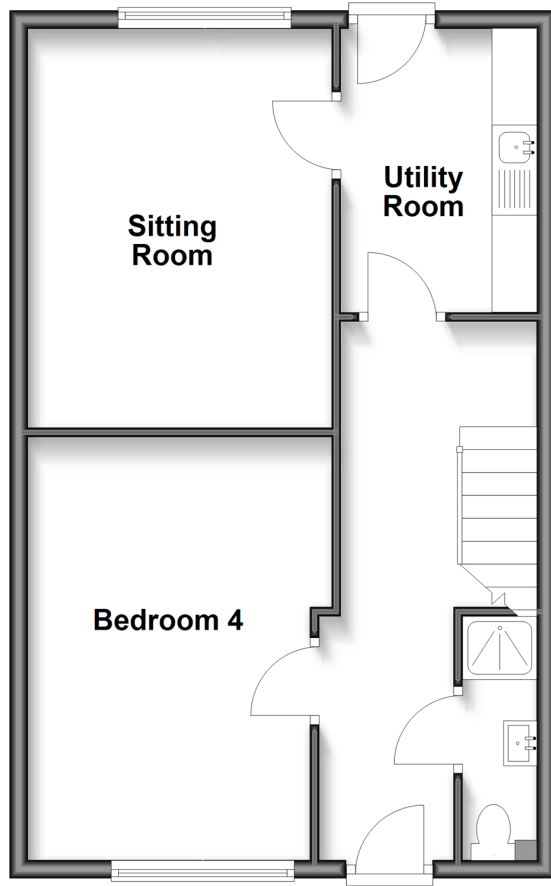
OVER 60?

Secure this property
for up to **59% less!**

Wards
Helping you move forwards

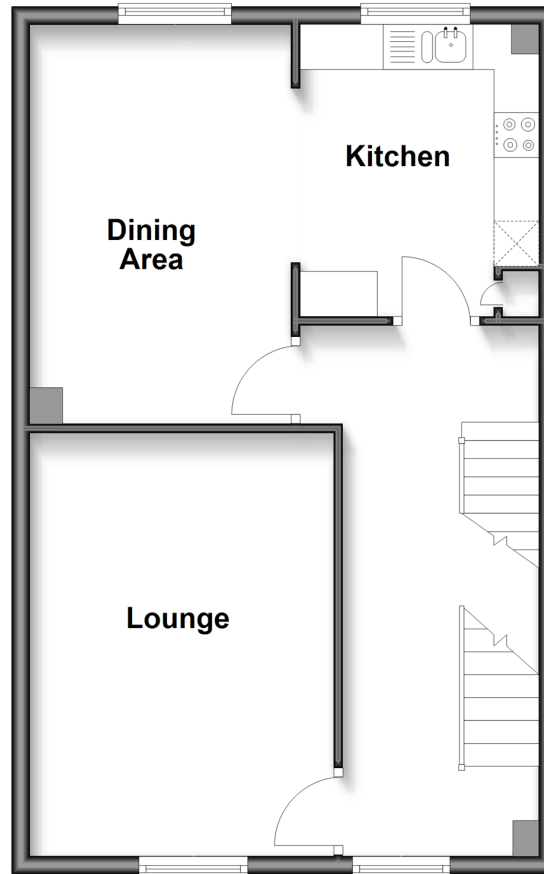
Ground Floor

Approx. 52.3 sq. metres (563.1 sq. feet)



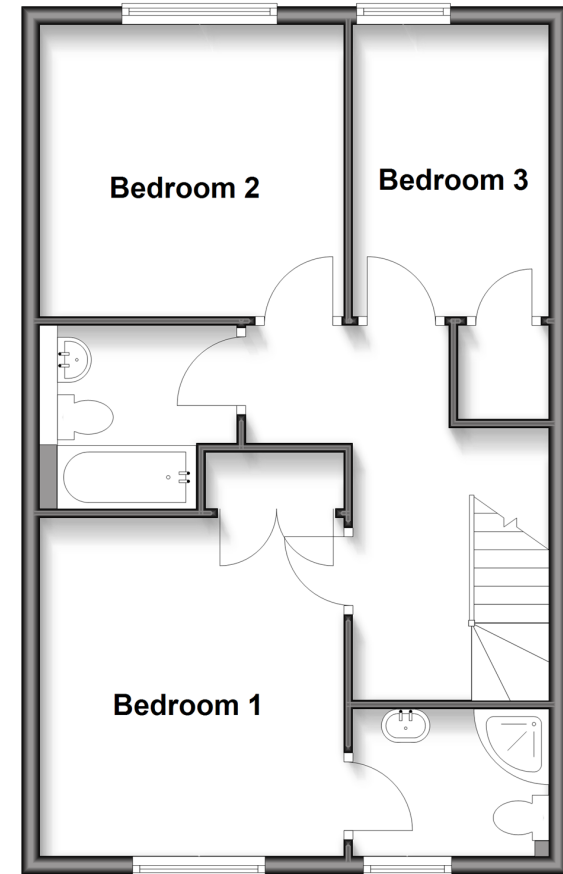
First Floor

Approx. 52.3 sq. metres (563.1 sq. feet)



Second Floor

Approx. 52.3 sq. metres (563.1 sq. feet)



Accommodation

GROUND FLOOR

Entrance Hallway
Shower Room
Bedroom 4: 15'4 x 11'3 (4.68m x 3.43m)
Sitting Room: 14'8 x 11'0 (4.47m x 3.36m)
Utility Room: 10'7 x 7'3 (3.23m x 2.21m)

FIRST FLOOR

Landing
Lounge : 15'7 x 11'6 (4.75m x 3.51m)
Dining Area : 14'4 x 9'8 (4.37m x 2.95m)
Kitchen: 10'9 x 9'2 (3.28m x 2.80m)

SECOND FLOOR

Landing
Bedroom 1: 12'6 x 11'3 (3.81m x 3.43m)
En-suite
Bathroom
Bedroom 2: 11'7 x 10'11 (3.53m x 3.33m)
Bedroom 3: 10'11 x 6'9 (3.33m x 2.06m)

OUTSIDE

Front and Rear Gardens
Driveway Parking
Additional communal parking



Main features

- Chain free , sought after location
- Driveway parking
- Low maintenance rear garden
- Only minutes from the beach and Deal's selection of shops, restaurants and bars
- Spacious and flexible accommodation to suit your families needs



Nearest Schools

Primary Schools: Deal Parochial C of E Primary 0.2 miles, The Downs C of E Primary 0.5 miles, Warden House Primary 0.9 miles

Secondary Schools: Goodwin Academy 0.4 miles,



Transport Information

Train Stations: Deal 0.7 miles, Walmer 0.9 miles, Martin Mill 3.6 miles



Address

Cavalry Court, Walmer, Deal, Kent, CT14



Directions

For directions to this property please contact us.



Wards
Helping you move forwards

Call Deal Branch 01304 361420 ■ wardsofkent.co.uk



■ Legal advice should be taken to verify fixtures/fittings, planning, alterations and/or lease details ■ Appliances & services are untested, dimensions are approximate and floor plans are not to scale
■ Through a Homewise Home For Life Plan people aged 60+ can secure this property for up to 59% less, by purchasing a Lifetime Lease.



10635263/20250220/BG/LB1