



Price
£300,000

Freehold

3x  2x  2x 

**Birdwood Avenue, Deal,
Kent, CT14**

OVER 60?

Secure this property
for up to **59% less!**

Wards
Helping you move forwards



Main features

- Off road parking for several cars
- Large sunny aspect rear garden
- useful downstairs bedroom/study with en-suite shower room
- Extended to the side and rear creating ample living space
- Located in a convenient area within a short drive of Deal high street and sea front

Accommodation

GROUND FLOOR

Entrance Hallway

Kitchen/Breakfast Room : 19'3 x 10'4 (5.87m x 3.15m)

Study/Guest Room: 9'5 x 7'3 (2.87m x 2.21m)

En-suite Shower Room

Lounge : 12'8 x 10'6 (3.86m x 3.20m)

Dining Area : 11'7 x 8'5 (3.53m x 2.57m)

FIRST FLOOR

Landing

Bedroom 1: 12'9 x 10'7 (3.89m x 3.23m)

Bedroom 2: 10'1 x 10'0 (3.08m x 3.05m)

Bedroom 3: 8'10 x 8'2 (2.69m x 2.49m)

Bathroom

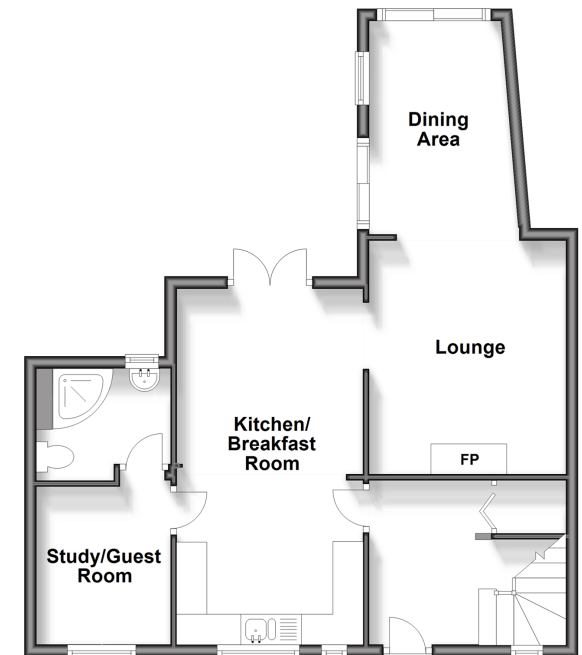
OUTSIDE

Driveway

Rear Garden

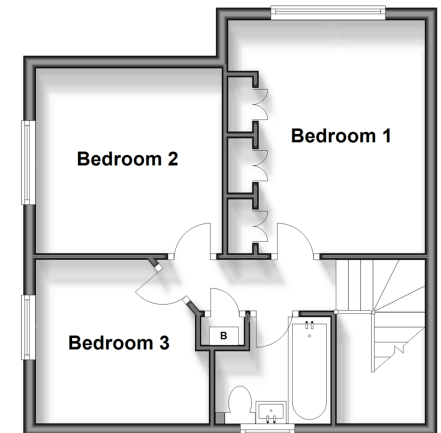
Ground Floor

Approx. 59.1 sq. metres (635.8 sq. feet)



First Floor

Approx. 40.2 sq. metres (432.4 sq. feet)



Call Deal - 01304 361420 ■ wardsofkent.co.uk

- Legal advice should be taken to verify fixtures/fittings, planning, alterations and/or lease details
- Appliances & services are untested, dimensions are approximate and floor plans are not to scale
- Through a Homewise Home For Life Plan people aged 60+ can secure this property for up to 59% less, by purchasing a Lifetime Lease.



10635044/20250322/BG/WSM