



**OVER 60?**

Secure this property  
for up to **59% less!**

**Price**

**£400,000**

**Freehold**

2x  1x  1x 

**Water Street, Deal,  
Kent, CT14**

*Wards*  
Helping you move forwards



## Main features

- Sunny aspect garden with rear access
- Packed with character features
- Open plan kitchen/diner area
- Situated within the heart of Deal with local shops and markets on the doorstep
- Comes with double glazing throughout and a log burner

## Accommodation

### SPLIT GROUND FLOOR

Entrance Hallway

Lounge: 12'8 x 10'10 (3.86m x 3.30m)

Cloakroom

Dining Area: 10'11 x 10'9 (3.33m x 3.28m)

Kitchen: 13'0 x 12'10 (3.97m x 3.91m)

### SPLIT LEVEL FIRST FLOOR

Landing

Bedroom 1: 14'0 x 10'10 (4.27m x 3.30m)

Bedroom 2: 12'2 x 11'8 (3.71m x 3.56m)

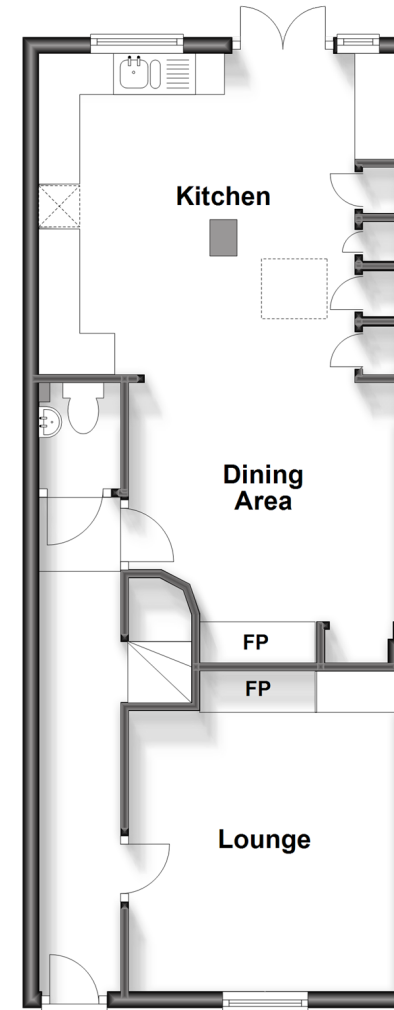
Bathroom

### OUTSIDE

Courtyard Garden

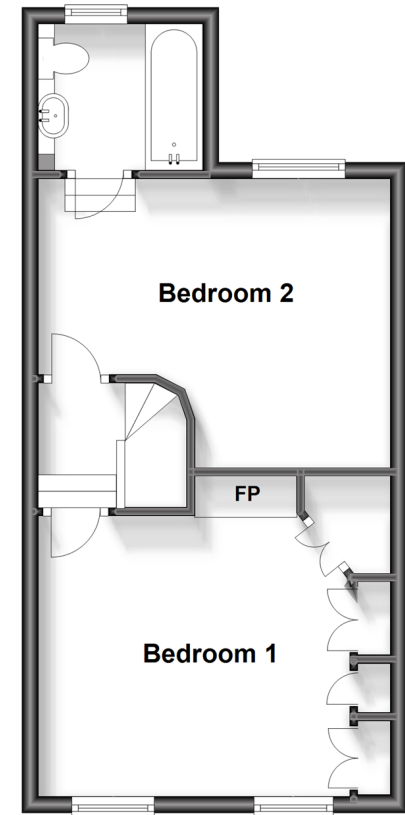
### Split Level Ground Floor

Approx. 49.7 sq. metres (534.8 sq. feet)



### Split Level First Floor

Approx. 36.1 sq. metres (388.6 sq. feet)



**Call Deal - 01304 361420 ■ [wardsofkent.co.uk](http://wardsofkent.co.uk)**

- Legal advice should be taken to verify fixtures/fittings, planning, alterations and/or lease details
- Appliances & services are untested, dimensions are approximate and floor plans are not to scale
- Through a Homewise Home For Life Plan people aged 60+ can secure this property for up to 59% less, by purchasing a Lifetime Lease.



10634726/20250102/LB1/WSM