



Guide Price
£120,000

Leasehold

3x  1x  2x 

**Kingsdown Park, Upper
Street, Kingsdown, Deal,
Kent, CT14**

Wards
Helping you move forwards



Main features

- Adapted stairs and under floor heating
- Ideal holiday home or investment
- Within a short walk of local amenities and Kingsdown beach
- Generous front and rear decking in peaceful position within the park
- In great condition throughout with many improvements made by current owner to include a new kitchen and electric box

Accommodation

GROUND FLOOR

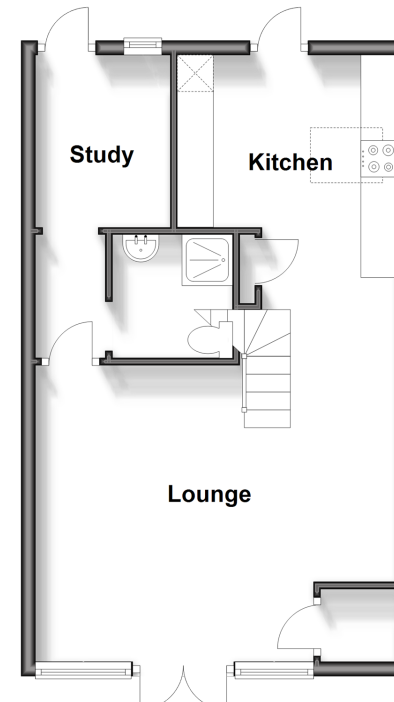
Lounge : 17'7 x 13'4 (5.36m x 4.07m)
 kitchen: 11'6 x 8'11 (3.51m x 2.72m)
 Study/Bedroom 3: 7'8 x 6'4 (2.34m x 1.93m)
 Shower Room

FIRST FLOOR

Bedroom 1: 13'7 x 10'5 (4.14m x 3.18m)
 Bedroom 2: 11'7 x 10'5 (3.53m x 3.18m)

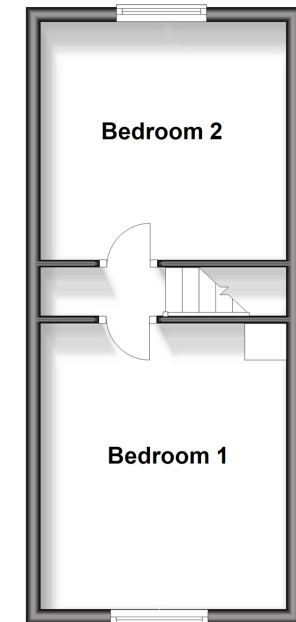
Ground Floor

Approx. 41.6 sq. metres (447.6 sq. feet)



First Floor

Approx. 27.4 sq. metres (295.0 sq. feet)



Call Deal - 01304 361420 ■ wardsofkent.co.uk

- If buying to let, the energy rating will need to be improved to at least 'E' rating before you can let the property
- Appliances & services are untested, dimensions are approximate and floor plans are not to scale

- Legal advice should be taken to verify fixtures/fittings, planning, alterations and/or lease details



10635202/20250927/WSM/WSM