



OVER 60?

Secure this property
for up to **59% less!**

Price
£355,000

Freehold

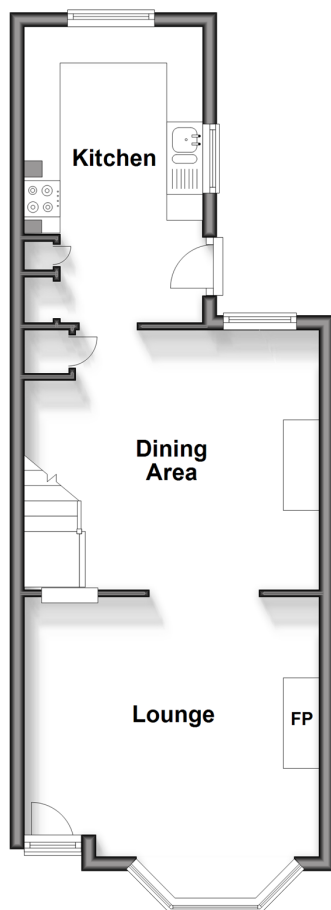
4x  2x  2x 

**Southwall Road,
Walmer, Deal, Kent,
CT14**

Wards
Helping you move forwards

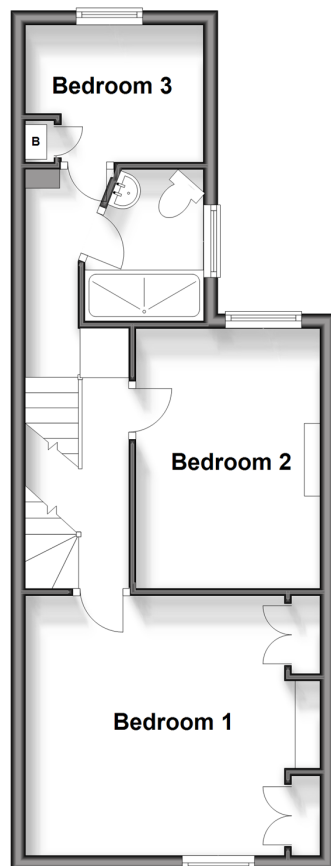
Ground Floor

Approx. 40.3 sq. metres (434.2 sq. feet)



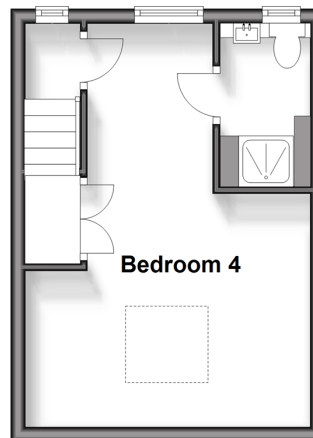
Split Level First Floor

Approx. 40.3 sq. metres (434.0 sq. feet)



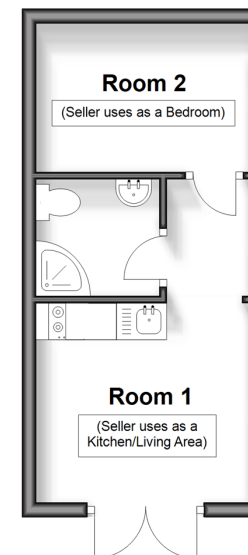
Second Floor

Approx. 22.2 sq. metres (238.9 sq. feet)



Outbuilding

Approx. 19.7 sq. metres (211.9 sq. feet)



Accommodation

GROUND FLOOR

Lounge : 13'6 x 11'8 (4.12m x 3.56m)
Dining Area : 13'7 x 11'9 (4.14m x 3.58m)
Kitchen: 13'3 x 8'2 (4.04m x 2.49m)

SPLIT LEVEL FIRST FLOOR

Landing
Bedroom 3: 8'2 x 6'1 (2.49m x 1.86m)
Shower Room
Bedroom 2: 11'11 x 8'8 (3.63m x 2.64m)
Bedroom 1: 12'11 x 11'10 (3.94m x 3.61m)

SECOND FLOOR

Landing
Bedroom 4: 18'3 x 12'0 (5.57m x 3.66m)
En-suite Shower

OUTSIDE

Off Road Parking
Rear Garden

OUTBUILDING

Room 1: 9'8 x 8'10 (2.95m x 2.69m)
Shower Room 2
Room 2: 9'8 x 6'9 (2.95m x 2.06m)



Main features

- Recently refurbished with new wood burner fitted
- Exposed brick and other character features
- Off road parking to the front
- Sought after location within a short distance to the high street
- Multiple handy outbuildings including fully powered outbuilding at the end of the garden



Nearest Schools

Primary Schools: Sandown School 0.7 miles, Warden House Primary 0.7 miles, The Downs C of E Primary 1.1 miles

Secondary Schools: Brewood Secondary School 0.7 miles,



Transport Information

Train Stations: Deal 0.6 miles, Walmer 2.4 miles, Sandwich 5.4 miles



Address

Southwall Road, Walmer, Deal, Kent, CT14



Directions

For directions to this property please contact us.





Wards
Helping you move forwards

Call Deal Branch 01304 361420 ■ wardsofkent.co.uk



■ Legal advice should be taken to verify fixtures/fittings, planning, alterations and/or lease details ■ Appliances & services are untested, dimensions are approximate and floor plans are not to scale
■ Through a Homewise Home For Life Plan people aged 60+ can secure this property for up to 59% less, by purchasing a Lifetime Lease.



10631651/20241203/WSM/WSM