



Price
£260,000

Freehold

2x  1x  1x 

**St. Gregory's Close,
Deal, Kent, CT14**

OVER 60?

Secure this property
for up to **59% less!**

Wards
Helping you move forwards



Main features

- Garden office cabin ideal for home working
- In excellent condition throughout
- Tucked away in a quiet cul-de-sac
- Well kept front and rear gardens with side access and decking
- Large open plan lounge/dining space with patio doors

Accommodation

GROUND FLOOR

Entrance Hallway

Lounge/Diner : 19'5 x 11'0 (5.92m x 3.36m)

Kitchen : 12'1 x 7'4 (3.69m x 2.24m)

FIRST FLOOR

Landing

Bathroom

Bedroom 2: 10'2 x 10'1 (3.10m x 3.08m)

Bedroom 1: 14'7 x 8'11 (4.45m x 2.72m)

OUTSIDE

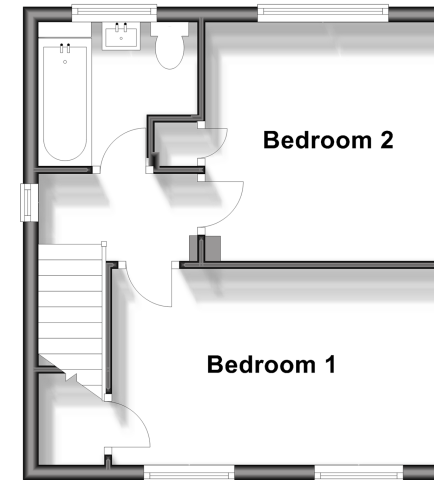
Front and Rear Gardens

OUTBUILDING

Garden Study

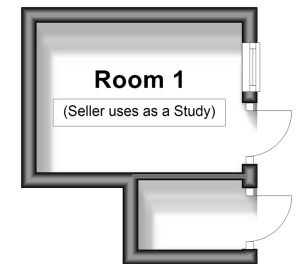
First Floor

Approx. 30.6 sq. metres (329.3 sq. feet)



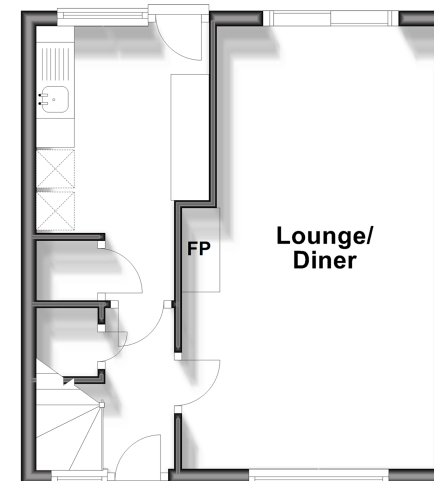
Outbuilding

Approx. 6.7 sq. metres (72.2 sq. feet)



Ground Floor

Approx. 30.6 sq. metres (329.3 sq. feet)



Call Deal - 01304 361420 ■ wardsofkent.co.uk

- Legal advice should be taken to verify fixtures/fittings, planning, alterations and/or lease details
- Appliances & services are untested, dimensions are approximate and floor plans are not to scale
- Through a Homewise Home For Life Plan people aged 60+ can secure this property for up to 59% less, by purchasing a Lifetime Lease.



10634862/20240912/BG/WSM