



**Price**  
**£230,000**

**Freehold**

3x  1x  2x 

**Mill Road, Deal, Kent,  
CT14**

**OVER 60?**

Secure this property  
for up to **59% less!**

*Wards*  
Helping you move forwards



## Main features

- No onward chain
- Perfect for first time buyers or investors
- Spacious rear garden with side access
- potential to improve and modernise throughout
- Located within a short distance of transport links, schools and parks

## Accommodation

### GROUND FLOOR

Entrance Hallway  
 Lounge : 12'4 x 11'2 (3.76m x 3.41m)  
 Dining Room : 11'7 x 11'1 (3.53m x 3.38m)  
 Kitchen : 11'9 x 6'3 (3.58m x 1.91m)  
 Lean-to: 7'0 x 7'0 (2.14m x 2.14m)  
 Cloakroom

### FIRST FLOOR

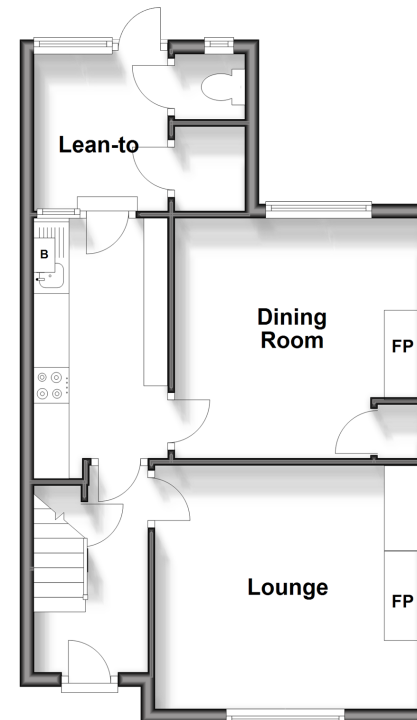
Landing  
 Bedroom 3: 8'0 x 6'2 (2.44m x 1.88m)  
 Bedroom 1: 11'9 x 11'2 (3.58m x 3.41m)  
 Bedroom 2: 11'9 x 11'2 (3.58m x 3.41m)  
 Bathroom

### OUTSIDE

Front and Rear Gardens

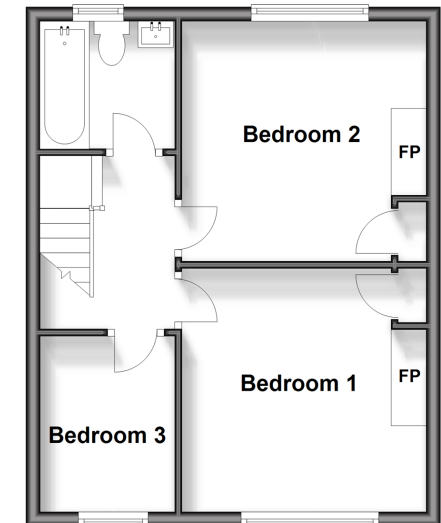
### Ground Floor

Approx. 43.5 sq. metres (468.7 sq. feet)



### First Floor

Approx. 37.5 sq. metres (404.1 sq. feet)



Call Deal - 01304 361420 ■ [wardsofkent.co.uk](http://wardsofkent.co.uk)

■ Legal advice should be taken to verify fixtures/fittings, planning, alterations and/or lease details  
 ■ Through a Homewise Home For Life Plan people aged 60+ can secure this property for up to 59% less, by purchasing a Lifetime Lease.

■ Appliances & services are untested, dimensions are approximate and floor plans are not to scale



10635145/20240831/BG/WSM