



Price
£350,000

Freehold

4x  1x  1x 

**Curzon Close, Walmer,
Deal, Kent, CT14**

OVER 60?

Secure this property
for up to **59% less!**

Wards
Helping you move forwards



Main features

- Quiet cul-de-sac with a short walk to primary schools
- Excellent family house
- Recently updated high specification kitchen and bathroom
- Walled sunny aspect rear garden with brick built shed

Accommodation

GROUND FLOOR

Entrance Hallway

Cloakroom

Lounge : 13'7 x 12'1 (4.14m x 3.69m)

Kitchen/Diner: 17'8 x 8'10 (5.39m x 2.69m)

FIRST FLOOR

Landing

Bedroom 2: 11'4 x 9'1 (3.46m x 2.77m)

Bedroom 4: 9'11 x 6'10 (3.02m x 2.08m)

Bathroom

Bedroom 3: 11'3 x 9'9 (3.43m x 2.97m)

Bedroom 1: 12'1 x 11'4 (3.69m x 3.46m)

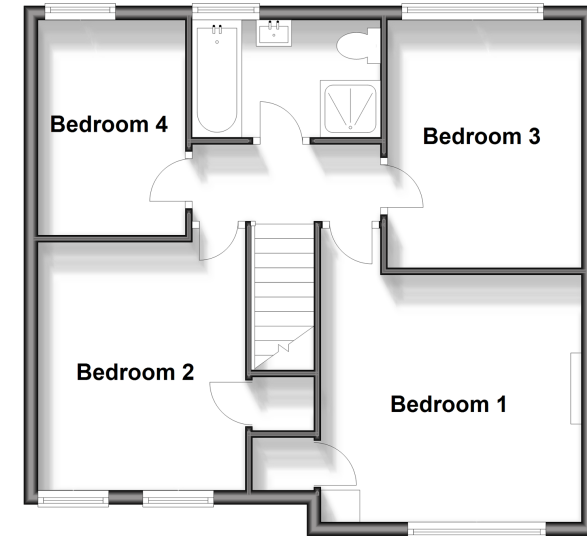
OUTSIDE

Front and Rear Gardens

Driveway

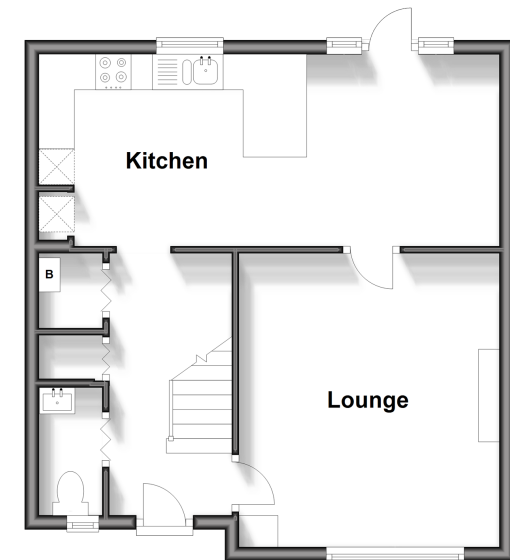
First Floor

Approx. 52.4 sq. metres (564.4 sq. feet)



Ground Floor

Approx. 43.8 sq. metres (471.8 sq. feet)



Call Deal - 01304 361420 ■ wardsokent.co.uk

- Legal advice should be taken to verify fixtures/fittings, planning, alterations and/or lease details
- Appliances & services are untested, dimensions are approximate and floor plans are not to scale
- Through a Homewise Home For Life Plan people aged 60+ can secure this property for up to 59% less, by purchasing a Lifetime Lease.



10635104/20240803/BG/LB1