



**Price**

**£490,000**

**Freehold**

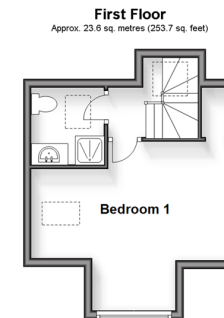
4x  2x  1x 

**Jubilee Road, Worth,  
Deal, Kent, CT14**

**OVER 60?**

Secure this property  
for up to **59% less!**

*Wards*  
Helping you move forwards



## Accommodation

### GROUND FLOOR

Entrance Hallway

Study/Bedroom 4: 12'7 x 12'4 (3.84m x 3.76m)

Bedroom 3: 12'3 x 10'6 (3.74m x 3.20m)

Bedroom 2: 15'6 x 15'6 (4.73m x 4.73m)

Bathroom

Kitchen/Breakfast area: 18'10 x 9'0 (5.74m x 2.75m)

Lounge/Diner: 23'1 x 18'3 (7.04m x 5.57m)

### FIRST FLOOR

Landing

Bedroom 1: 16'7 x 10'6 (5.06m x 3.20m)

Shower Room

### OUTSIDE

Driveway

Garage

Front & Rear Gardens

Outbuildings





## Main features

- Stunning countryside views extending to Sandwich Bay
- Flexible accommodation throughout
- Landscaped front and rear gardens
- Single garage, home office with separate entrance and outbuildings for storage use
- Situated between Deal and Sandwich on a major bus route and within Manwood's catchment



### Nearest Schools

Primary Schools: Worth Primary 0.4 miles, Sandwich Junior School 1.3 miles, Eastry C of E Primary 1.8 miles  
Secondary Schools: Sandwich Technology School 1.0 miles, Sir Roger Manwood's School 1.4 miles,  
Further Education: Goodwin Academy 3.0 miles



### Transport Information

Train Stations: Sandwich 1.4 miles, Deal 2.9 miles, Walmer 3.5 miles



### Address

Jubilee Road, Worth, Deal, Kent, CT14



### Directions

For directions to this property please contact us.





**Wards**  
Helping you move forwards

Call Deal Branch 01304 361420 ■ [wardsofkent.co.uk](http://wardsofkent.co.uk)



■ Legal advice should be taken to verify fixtures/fittings, planning, alterations and/or lease details ■ Appliances & services are untested, dimensions are approximate and floor plans are not to scale  
■ Through a Homewise Home For Life Plan people aged 60+ can secure this property for up to 59% less, by purchasing a Lifetime Lease.



10635064/20250319/LB1/LB1