



**OVER 60?**

Secure this property  
for up to **59% less!**

**Price**  
**£575,000**

**Freehold**

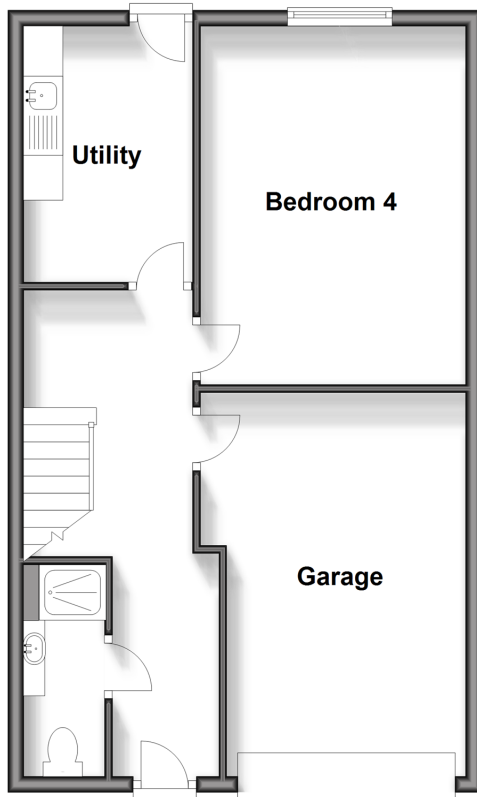
4x  3x  1x 

**Cavalry Court, Walmer,  
Deal, Kent, CT14**

*Wards*  
Helping you move forwards

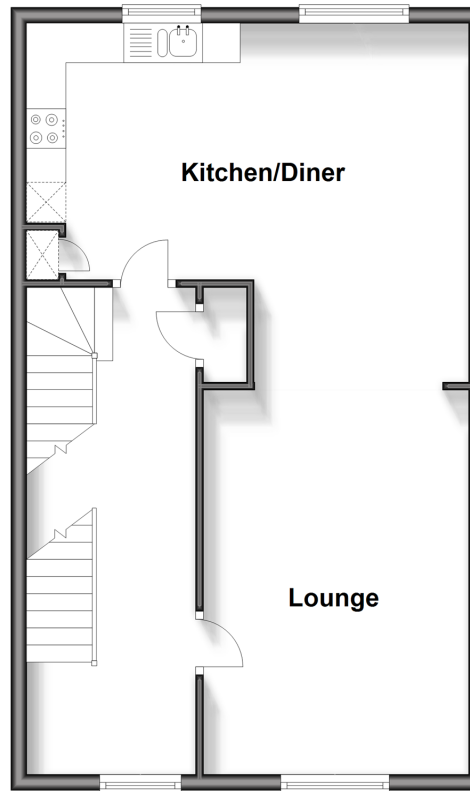
### Ground Floor

Approx. 53.2 sq. metres (572.6 sq. feet)



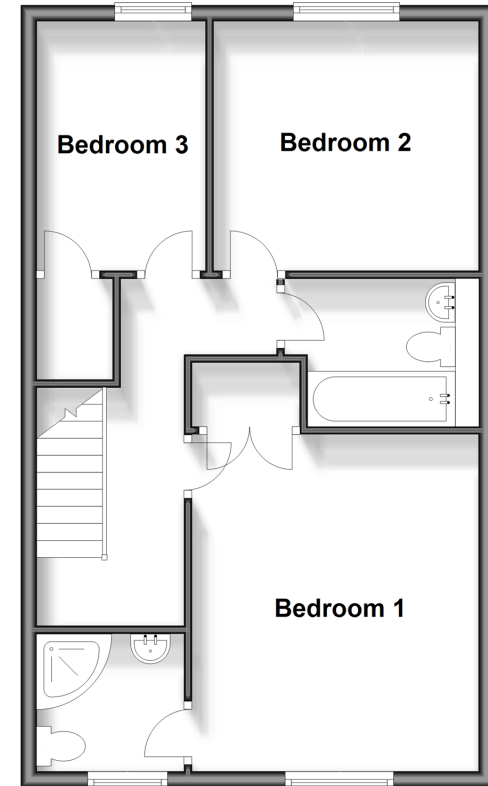
### First Floor

Approx. 53.2 sq. metres (572.6 sq. feet)



### Second Floor

Approx. 53.2 sq. metres (572.6 sq. feet)



## Accommodation

### GROUND FLOOR

Entrance Hallway  
Cloakroom/Shower Room  
Utility Room  
Bedroom 4: 14'10 x 11'1 (4.52m x 3.38m)

### FIRST FLOOR

Landing  
Lounge : 15'6 x 11'7 (4.73m x 3.53m)  
Kitchen/Diner: 19'0 x 15'1 (5.80m x 4.60m)

### SECOND FLOOR

Bedroom 3: 11'2 x 6'11 (3.41m x 2.11m)  
Bedroom 2: 11'7 x 11'3 (3.53m x 3.43m)  
Bathroom  
Bedroom 1: 13'10 x 11'6 (4.22m x 3.51m)  
En-suite Shower Room

### OUTSIDE

Integral Garage  
Driveway  
Front and Rear Gardens





## Main features

- Prestigious development within the barracks
- Integrated garage and driveway
- Large windows and high ceilings throughout
- Large open plan living accommodation the 1st floor with ideal guest suite on the ground floor
- Minutes from the beach and shops on Walmer green



### Nearest Schools

Primary Schools: Deal Parochial C of E Primary 0.2 miles, The Downs C of E Primary 0.5 miles, Warden House Primary 0.9 miles

Secondary Schools: Goodwin Academy 0.4 miles,



### Transport Information

Train Stations: Deal 0.7 miles, Walmer 0.9 miles, Martin Mill 3.6 miles



### Address

Cavalry Court, Walmer, Deal, Kent, CT14



### Directions

For directions to this property please contact us.





**Wards**  
Helping you move forwards

Call Deal Branch 01304 361420 ■ [wardsofkent.co.uk](http://wardsofkent.co.uk)



■ Legal advice should be taken to verify fixtures/fittings, planning, alterations and/or lease details ■ Appliances & services are untested, dimensions are approximate and floor plans are not to scale  
■ Through a Homewise Home For Life Plan people aged 60+ can secure this property for up to 59% less, by purchasing a Lifetime Lease.



10635011/20240525/EP/LB1