



**Price**  
**£575,000**

**Freehold**

3x  1x  2x 

**Downlands, Walmer,  
Deal, Kent, CT14**

**OVER 60?**

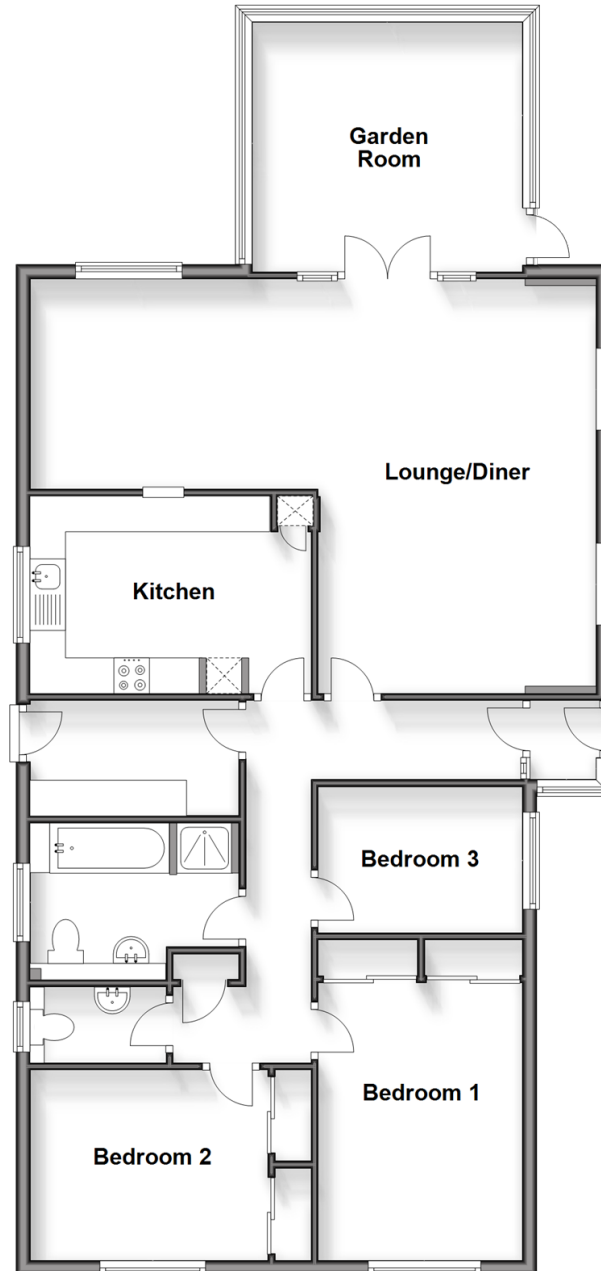
Secure this property  
for up to **59% less!**

*Wards*  
Helping you move forwards



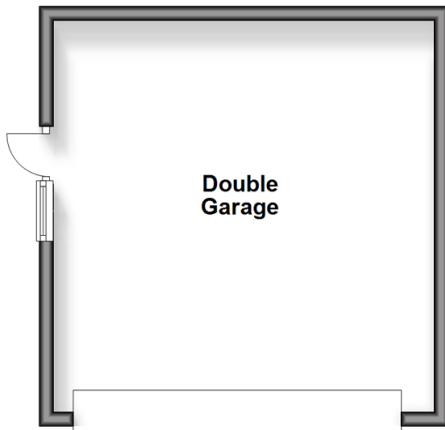
## Ground Floor

Approx. 116.2 sq. metres (1250.6 sq. feet)



## Outbuilding

Approx. 29.3 sq. metres (315.4 sq. feet)



## Accommodation

### GROUND FLOOR

#### Entrance Hallway

Lounge/Diner: (L-shaped) 19'9 x 12'8  
(6.02m x 3.86m) plus 13'3 x 9'6 (4.04m x 2.90m)

Garden Room : 12'0 x 10'1 (3.66m x 3.08m)

Kitchen : 12'9 x 8'8 (3.89m x 2.64m)

Utility Room : 9'0 x 5'0 (2.75m x 1.53m)

#### Bathroom

#### Cloakroom

Bedroom 2: 11'0 x 8'1 up to fitted wardrobes (3.36m x 2.47m)

Bedroom 1: 13'0 x 9'0 up to fitted wardrobes (3.97m x 2.75m)

Bedroom 3: 9'0 x 6'1 (2.75m x 1.86m)

### OUTSIDE

Front and Rear Gardens

Off Road Parking

Double Garage



## Main features

- Stunning bungalow in a very desirable area
- Extended driveway for several cars leading to double garage
- Sun Room to rear looking over the immaculate garden
- Finished to a very high standard both inside and out
- Walking distance to a selection of shops and bus route



### Nearest Schools

Primary Schools: The Downs C of E Primary 0.6 miles, Kingsdown and Ringwould CofE Primary 0.8 miles, St Mary's Catholic Primary 1.0 miles

Secondary Schools: Goodwin Academy 0.4 miles,



### Transport Information

Train Stations: Walmer 0.4 miles, Deal 1.7 miles, Martin Mill 2.5 miles



### Address

Downlands, Walmer, Deal, Kent, CT14



### Directions

For directions to this property please contact us.





*Wards*  
Helping you move forwards

Call Deal Branch 01304 361420 ■ [wardsofkent.co.uk](http://wardsofkent.co.uk)



■ Legal advice should be taken to verify fixtures/fittings, planning, alterations and/or lease details ■ Appliances & services are untested, dimensions are approximate and floor plans are not to scale  
■ Through a Homewise Home For Life Plan people aged 60+ can secure this property for up to 59% less, by purchasing a Lifetime Lease.



106331.39/20240404/BG/LB1