



**Price**  
**£350,000**

**Freehold**

3x  1x  1x 

**The Rise, Kingsdown,  
Deal, Kent, CT14**

**OVER 60?**

Secure this property  
for up to **59% less!**

*Wards*  
Helping you move forwards



**Split Level Ground Floor**  
Approx. 65.5 sq. metres (705.5 sq. feet)

## Main features

- **Spacious family house with potential to add your own stamp**
- **Private large sunny rear garden**
- **Garage and driveway parking**
- **Situated moments away from Ofsted outstanding Kingsdown school**
- **Updates done including some new windows and soffits.**

## Accommodation

### GROUND FLOOR

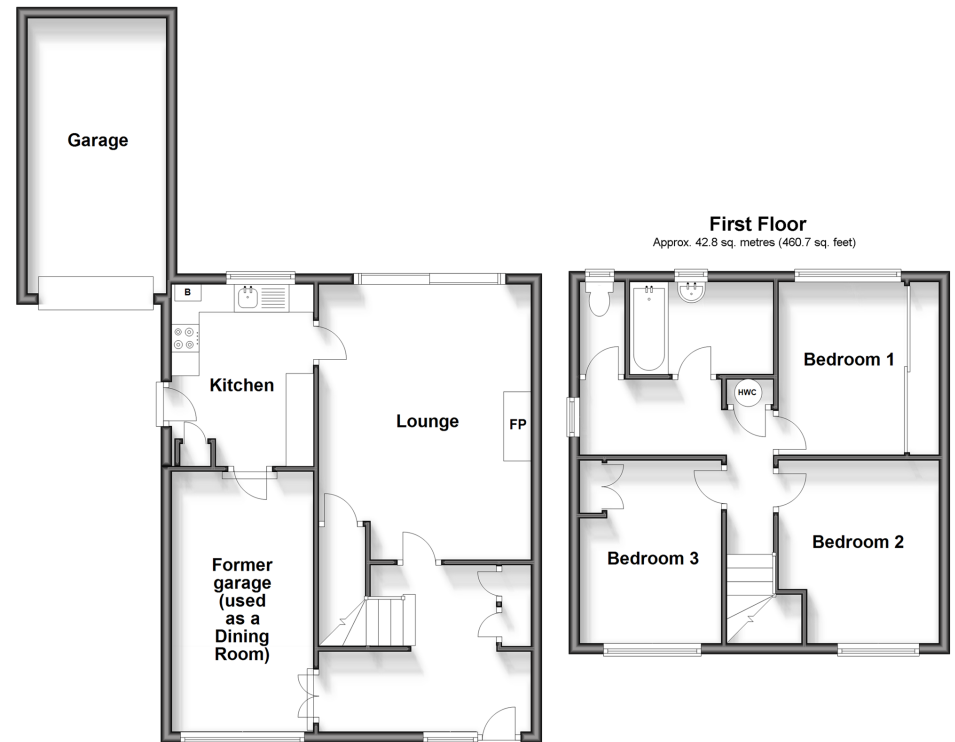
Entrance Hallway  
Former Garage/Dining Room: 16'1 x 8'7 (4.91m x 2.62m)  
Lounge : 16'3 x 13'6 (4.96m x 4.12m)  
Kitchen : 11'1 x 8'5 (3.38m x 2.57m)

### FIRST FLOOR

Landing  
Bedroom 2: 10'8 x 10'5 (3.25m x 3.18m)  
Bedroom 1: 11'2 x 8'8 (3.41m x 2.64m)  
Bathroom  
Separate Toilet  
Bedroom 3: 10'5 x 8'8 (3.18m x 2.64m)

### OUTSIDE

Driveway  
Garage  
Front and Rear Gardens



**Call Deal - 01304 361420 ■ wardsofkent.co.uk**

- Legal advice should be taken to verify fixtures/fittings, planning, alterations and/or lease details
- Through a Homewise Home For Life Plan people aged 60+ can secure this property for up to 59% less, by purchasing a Lifetime Lease.

- Appliances & services are untested, dimensions are approximate and floor plans are not to scale



10634642/20240730/BG/BH