



**Price**  
**£490,000**

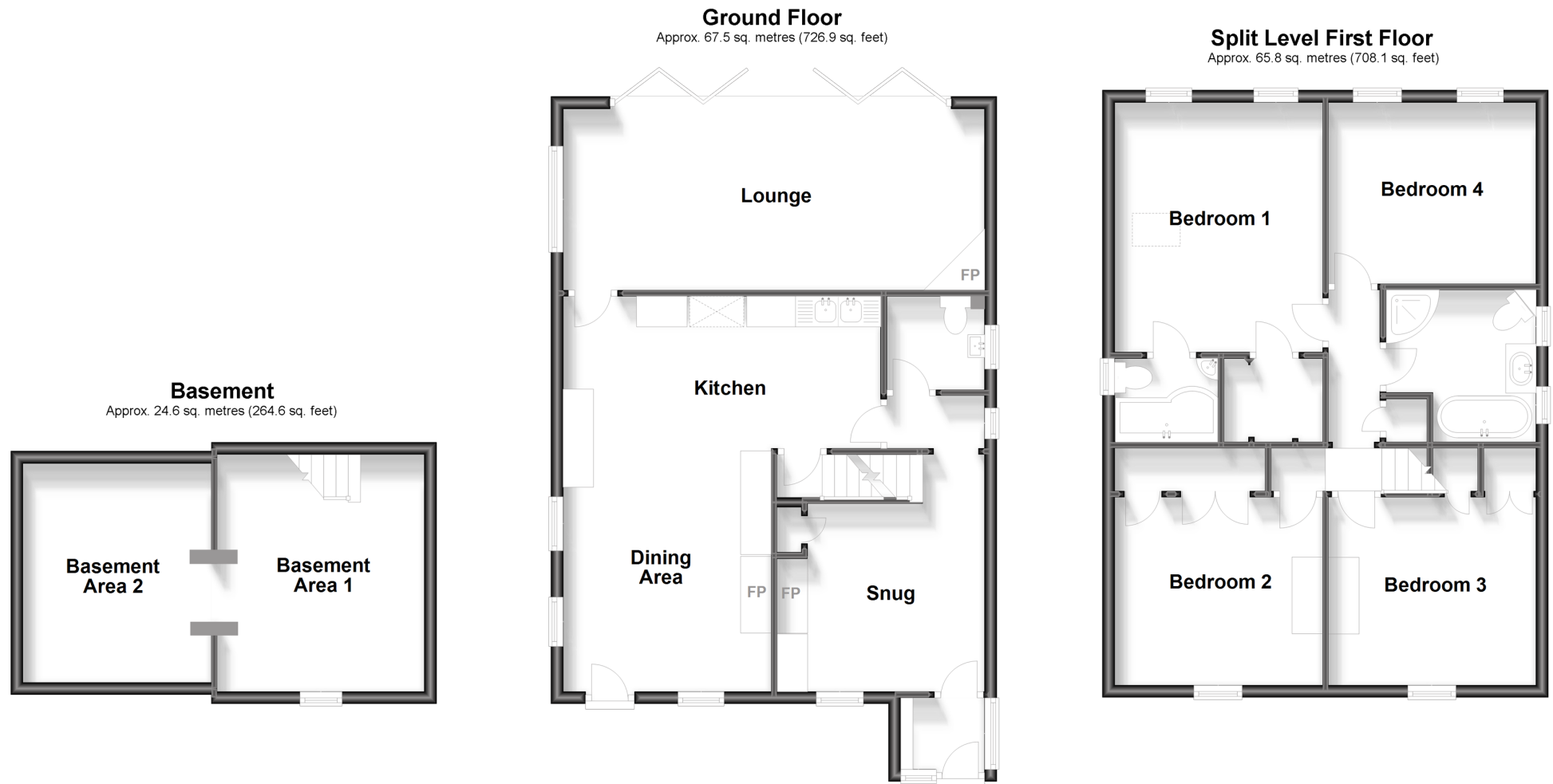
**Freehold**

4x  2x  2x 

**Belmont, Walmer, Deal,  
Kent, CT14**

*Wards*  
Helping you move forwards





## Accommodation

### BASEMENT

Basement Room 1: 12'9 x 11'2 (3.89m x 3.41m)

Basement Room 2 : 11'9 x 10'1 (3.58m x 3.08m)

### GROUND FLOOR

Snug: 12'8 x 11'1 (3.86m x 3.38m)

Dining Area: 13'2 x 11'1 (4.02m x 3.38m)

Kitchen : 17'0 x 8'0 (5.19m x 2.44m)

Lounge : 22'7 x 9'7 (6.89m x 2.92m)

### FIRST FLOOR

Bedroom 4: 10'11 x 10'7 (3.33m x 3.23m)

Bedroom 2 : 11'0 x 10'2 (3.36m x 3.10m)

Bathroom

Bedroom 3: 10'11 x 9'8 (3.33m x 2.95m)

Bedroom 1: 13'7 x 10'9 (4.14m x 3.28m)

### OUTSIDE

Front and Rear Garden

Driveway



## Main features

- No Onward Chain
- Bi-folds to the rear leading into the generous garden
- Convenient location with local amenities and transport links nearby
- Tucked away from the road with a private gated drive for multiple vehicles
- Packed full of features including vaulted ceilings and two basement areas



### Nearest Schools

Primary Schools: The Downs C of E Primary 1.1 miles, St Mary's Catholic Primary 1.2 miles, Deal Parochial C of E Primary 1.3 miles

Secondary Schools: Goodwin Academy 0.8 miles,



### Transport Information

Train Stations: Walmer 0.5 miles, Deal 2.2 miles, Martin Mill 3.3 miles



### Address

Belmont, Walmer, Deal, Kent, CT14



### Directions

For directions to this property please contact us.





Call Deal Branch 01304 361420 ■ [wardsofkent.co.uk](https://wardsofkent.co.uk)



■ Legal advice should be taken to verify fixtures/fittings, planning, alterations and/or lease details ■ Appliances & services are untested, dimensions are approximate and floor plans are not to scale



10634617/20250204/DCB/WSM