



**Price**  
**£420,000**

**Freehold**

3x  1x  1x 

Jarvist Place,  
Kingsdown, Deal, Kent,  
CT14

**OVER 60?**

Secure this property  
for up to **59% less!**



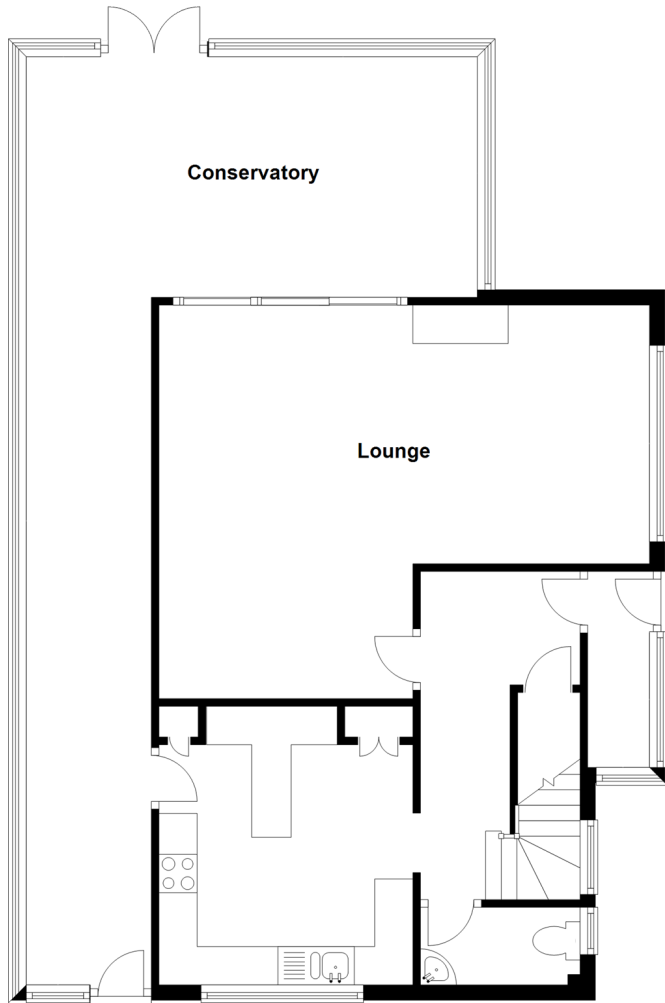
Video Tour available

*Wards*

Helping you move forwards

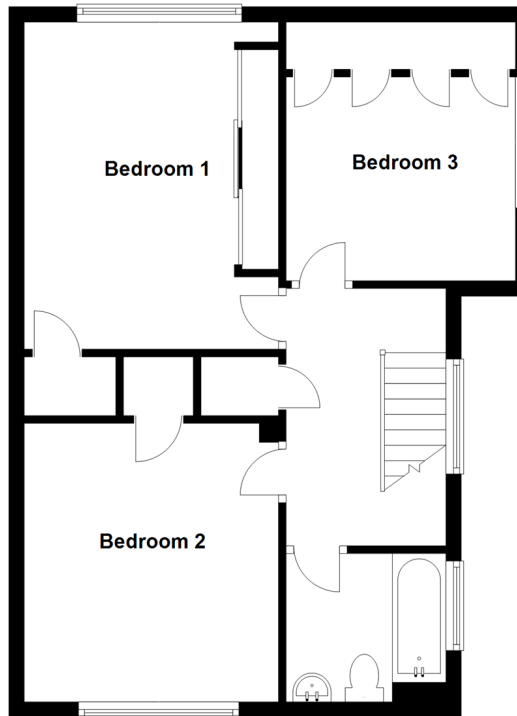
## Ground Floor

Approx. 88.9 sq. metres (957.4 sq. feet)



## First Floor

Approx. 51.9 sq. metres (558.7 sq. feet)



## Accommodation

### GROUND FLOOR

Entrance Porch

Entrance Hallway

Cloakroom

Kitchen : 12'0 x 11'2 (3.66m x 3.41m)

Conservatory : (L-shaped) 31'0 x 5'5 (9.46m x 1.65m) plus 10'3 x 19'2 (3.13m x 5.85m)

Lounge : 21'5 x 18'3 (6.53m x 5.57m)

### FIRST FLOOR

Landing

Bedroom 3: 9'10 x 8'10 (3.00m x 2.69m)

Bedroom 1: 14'2 x 11'2 (4.32m x 3.41m)

Bedroom 2: 11'11 x 11'2 (3.63m x 3.41m)

Bathroom

### OUTSIDE

Front and Rear Garden

Driveway

Garage





## Main features

- Very desirable cul-de-sac location
- Minutes from Kingsdown seafront
- Garage and driveway parking
- Large conservatory to the side and rear of property
- Private wrap around garden with lawn, decking and patio

## Nearest Schools

Primary Schools: Kingsdown and Ringwould CofE Primary 0.3 miles, The Downs C of E Primary 1.4 miles, Deal Parochial C of E Primary 1.7 miles

Secondary Schools: Learning Opportunities Centre

## Transport Information

Train Stations: Walmer 1.4 miles, Deal 2.4 miles, Martin Mill 2.6 miles

## Address

Jarvist Place, Kingsdown, Deal, Kent, CT14

## Directions

For directions to this property please contact us.





*Wards*  
Helping you move forwards

Call Deal Branch 01304 361420 ■ [wardsofkent.co.uk](http://wardsofkent.co.uk)



- Legal advice should be taken to verify fixtures/fittings, planning, alterations and/or lease details
- Appliances & services are untested, dimensions are approximate and floor plans are not to scale
- Through a Homewise Home For Life Plan people aged 60+ can secure this property for up to 59% less, by purchasing a Lifetime Lease.



10632443/20240716/WSM/JOE