



Price
£325,000

Freehold

2x  1x  1x 

**Hayes Road, St. James
Park, Greenhithe, Kent,
DA9**

OVER 60?

Secure this property
for up to **59% less!**

Wards
Helping you move forwards



Main features

- Delightful terraced house on sought after development
- Handy allocated parking space
- Stylish decor throughout with modern fitted kitchen
- Excellent location for M25/A2 and Stone Crossing station
- Desirable newly fitted bathroom

Accommodation

GROUND FLOOR

Lounge: 14'9 x 12'7 (4.50m x 3.84m)

Kitchen: 12'7 x 8'4 (3.84m x 2.54m)

FIRST FLOOR

Landing

Bedroom 1: 10'6 up to fitted wardrobes x 8'6 (3.20m x 2.59m)

Bathroom: 6'1 x 5'11 (1.86m x 1.80m)

Bedroom 2: 9'4 x 8'2 up to fitted wardrobes (2.85m x 2.49m)

OUT BUILDING

Summer House

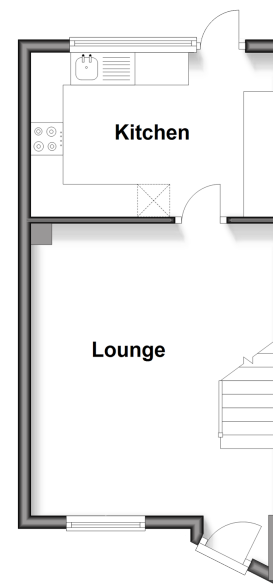
OUTSIDE

Front Garden

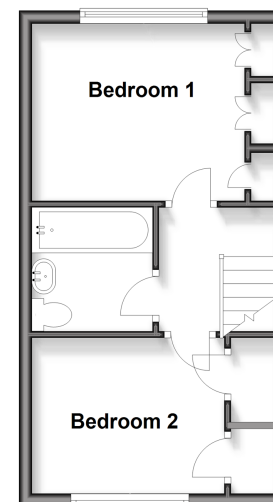
Rear Garden

Allocated Parking Space

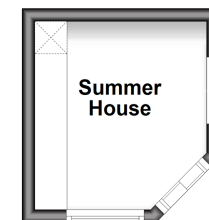
Ground Floor
Approx. 27.7 sq. metres (298.4 sq. feet)



First Floor
Approx. 27.5 sq. metres (296.1 sq. feet)



Outbuilding
Approx. 7.4 sq. metres (79.2 sq. feet)



Call Dartford - 01322 288211 ■ wardsofkent.co.uk

■ Legal advice should be taken to verify fixtures/fittings, planning, alterations and/or lease details
■ Through a Homewise Home For Life Plan people aged 60+ can secure this property for up to 50% less, by purchasing a Lifetime Lease.

■ Appliances & services are untested, dimensions are approximate and floor plans are not to scale



10546207/20251101/MP/LH