



OVER 60?

Secure this property
for up to **59% less!**

Price
£350,000

Freehold

2x  2x  1x 

**Laurence Rise, Dartford,
Kent, DA2**

Wards
Helping you move forwards



Main features

- Mid terraced house in peaceful family location
- En-suite to main bedroom
- Allocated parking and plenty of visitor bays
- Handy downstairs cloakroom
- Built in 2014

Accommodation

GROUND FLOOR

Hallway
 Kitchen: 10'0 x 6'0 (3.05m x 1.83m)
 Cloakroom
 Living Room: 19'0 x 13'0 (5.80m x 3.97m)

FIRST FLOOR

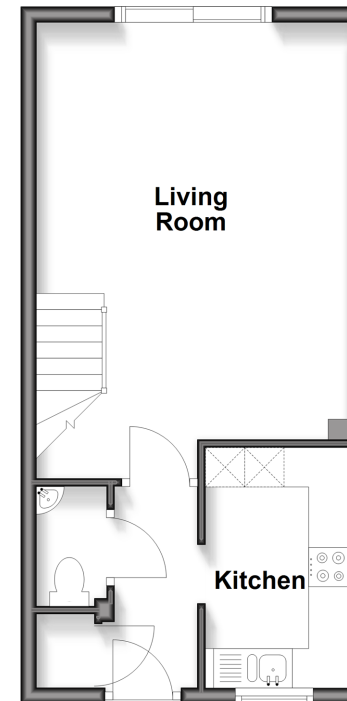
Landing
 Bedroom 1: 19'0 x 13'0 (5.80m x 3.97m)
 En-suite Shower Room
 Family Bathroom
 Bedroom 2: 12'0 x 11'0 (3.66m x 3.36m)

OUTSIDE

Front Garden
 Rear Garden
 Allocated Parking Space

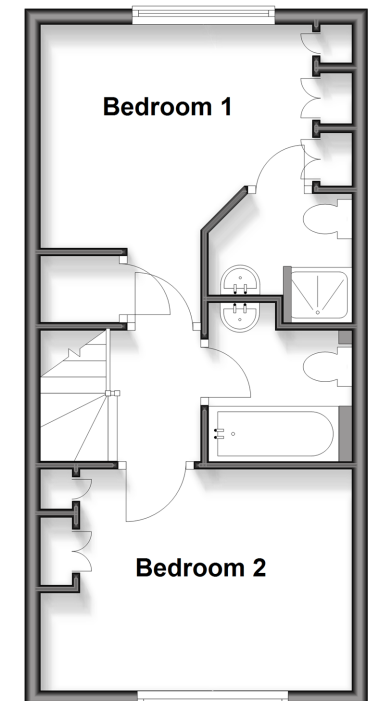
Ground Floor

Approx. 33.4 sq. metres (360.0 sq. feet)



First Floor

Approx. 32.4 sq. metres (349.0 sq. feet)



Call Dartford - 01322 288211 ■ wardsofkent.co.uk

■ Legal advice should be taken to verify fixtures/fittings, planning, alterations and/or lease details
 ■ Through a Homewise Home For Life Plan people aged 60+ can secure this property for up to 50% less, by purchasing a Lifetime Lease.

■ Appliances & services are untested, dimensions are approximate and floor plans are not to scale



10546181/20251004/MP/JH