



Price

£510,000

Freehold

4x  2x  2x 

**Foxwood Road, Bean,
Dartford, Kent, DA2**

OVER 60?

Secure this property
for up to **59% less!**

Wards
Helping you move forwards



Main features

- Semi-detached house with large driveway
- Separate kitchen ready to make your own
- Dedicated ground floor office room
- Peaceful rear garden ideal for entertaining
- Located next to a lovely park for your daily walks

Accommodation

GROUND FLOOR

Entrance Hallway: 24'1 x 12'2 (7.35m x 3.71m)
 Study
 Utility Room
 Kitchen/Diner: 17'6 x 10'5 (5.34m x 3.18m)
 Cloakroom
 Dining Area: 21'4 x 11'3 (6.51m x 3.43m)
 Lounge: 21'4 x 10'6 (6.51m x 3.20m)

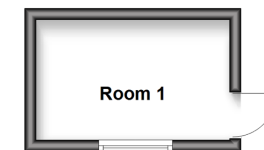
FIRST FLOOR

Landing
 Bedroom 1: 21'9 x 9'5 (6.63m x 2.87m)
 En-suite Shower Room: 7'5 x 6'8 (2.26m x 2.03m)
 Bedroom 3: 11'10 x 11'4 (3.61m x 3.46m)
 Bedroom 4: 10'2 x 8'2 (3.10m x 2.49m)
 Bedroom 2: 15'7 x 11'2 (4.75m x 3.41m)
 Family Bathroom: 6'11 x 6'8 (2.11m x 2.03m)

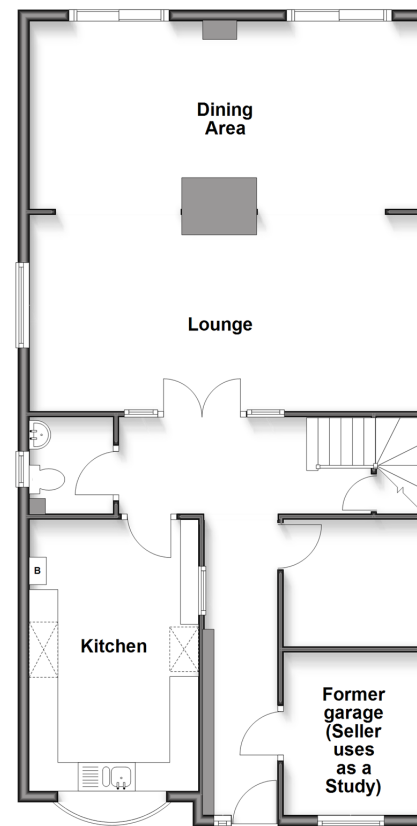
OUTSIDE

Front Garden
 Driveway
 Rear Garden

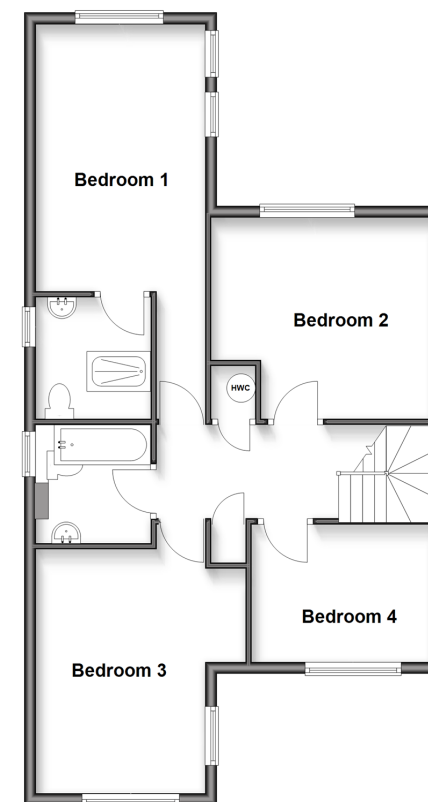
Outbuilding
 Approx. 7.1 sq. metres (76.8 sq. feet)



Ground Floor
 Approx. 95.1 sq. metres (1023.4 sq. feet)



First Floor
 Approx. 70.7 sq. metres (760.5 sq. feet)



Call Dartford - 01322 288211 ■ wardsofkent.co.uk

- Legal advice should be taken to verify fixtures/fittings, planning, alterations and/or lease details
- Appliances & services are untested, dimensions are approximate and floor plans are not to scale
- Through a Homewise Home For Life Plan people aged 60+ can secure this property for up to 50% less, by purchasing a Lifetime Lease.



10533609/20250823/LH/JH