



**OVER 60?**

Secure this property  
for up to **59% less!**

**Price**

**£390,000**

**Freehold**

3x  2x  1x 

**Ellingham View,  
Dartford, Kent, DA1**

*Wards*  
Helping you move forwards





## Main features

- Beautifully presented end terrace house on popular development
- Handy family bathroom and downstairs cloakroom
- Desirable sunny aspect garden
- Stunning position overlooking lake
- Ideal for M25/A2 motorways, great schools and reduced rate "Dart-Tag"

### Ground Floor

Approx. 33.7 sq. metres (362.2 sq. feet)

### First Floor

Approx. 33.7 sq. metres (362.2 sq. feet)

## Accommodation

### GROUND FLOOR

Hallway

Cloakroom

Lounge: 15'1 x 12'2 (4.60m x 3.71m)

Kitchen/Diner: 15'4 x 8'10 (4.68m x 2.69m)

### FIRST FLOOR

Bedroom 3: 7'6 x 6'0 (2.29m x 1.83m)

Bedroom 2: 9'3 x 7'6 (2.82m x 2.29m)

Family Bathroom

Bedroom 1: 12'9 x 9'7 (3.89m x 2.92m)

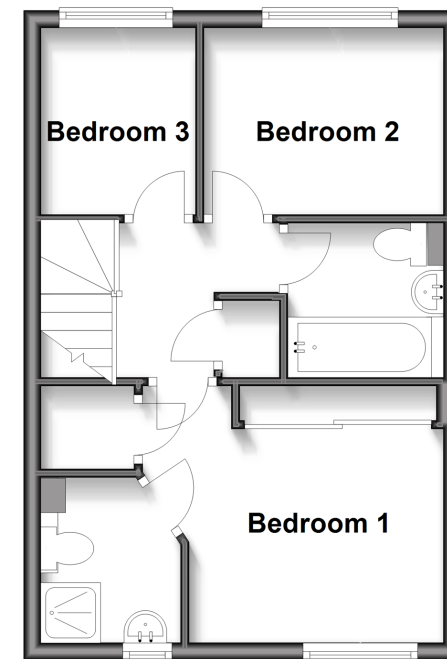
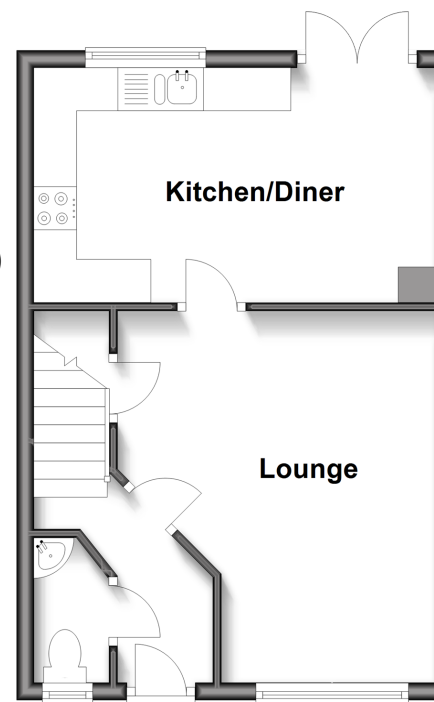
En-suite Shower Room

### OUTSIDE

Front Garden

Rear Garden

Parking



**Call Dartford - 01322 288211 ■ [wardsofkent.co.uk](http://wardsofkent.co.uk)**

- Legal advice should be taken to verify fixtures/fittings, planning, alterations and/or lease details
- Appliances & services are untested, dimensions are approximate and floor plans are not to scale
- Through a Homewise Home For Life Plan people aged 60+ can secure this property for up to 59% less, by purchasing a Lifetime Lease.



10546049/20250602/MP/JH