



Guide Price
£425,000

Freehold

4x  1x  2x 

**Henderson Drive,
Dartford, Kent, DA1**

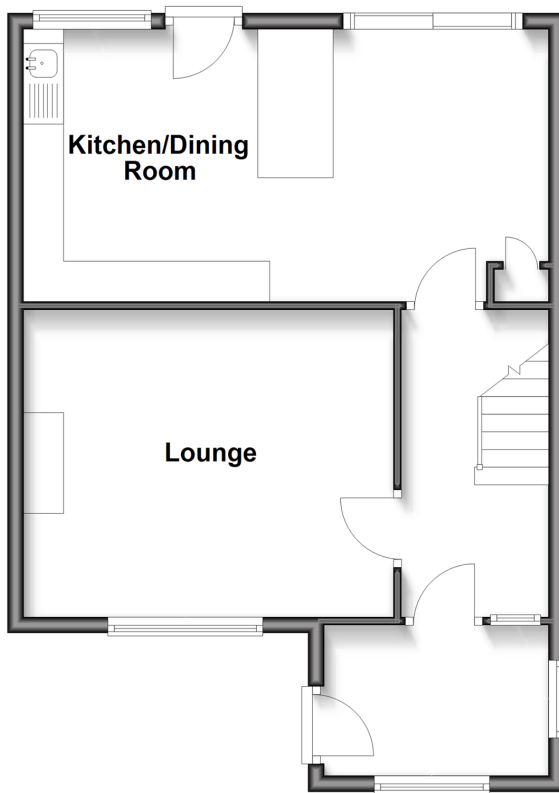
OVER 60?

Secure this property
for up to **59% less!**

Wards
Helping you move forwards

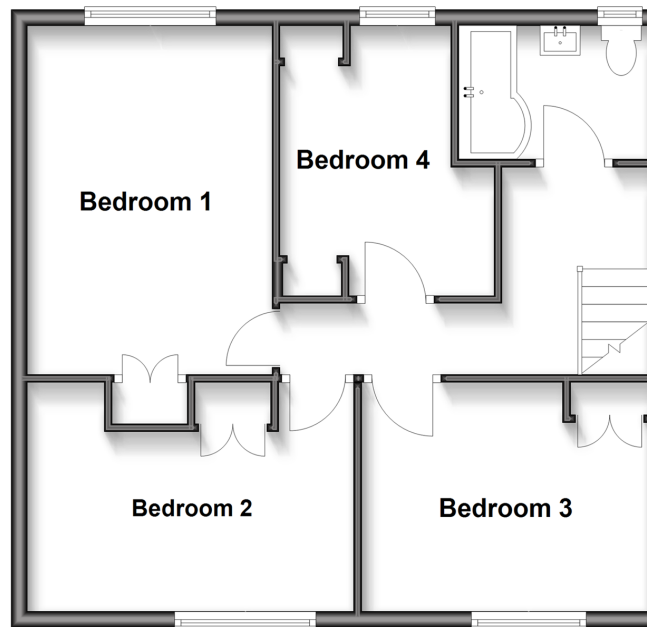
Ground Floor

Approx. 53.3 sq. metres (574.2 sq. feet)



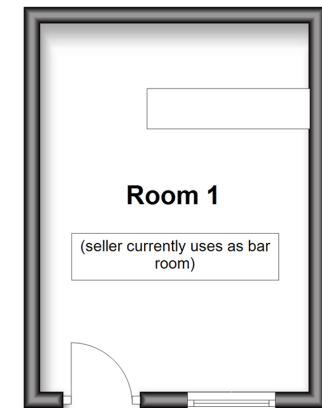
First Floor

Approx. 56.5 sq. metres (608.3 sq. feet)



Outbuilding

Approx. 15.4 sq. metres (165.7 sq. feet)



Accommodation

GROUND FLOOR

Porch
Hallway
Lounge
Kitchen/Dining Room: 21'4 x 11'0 (6.51m x 3.36m)

FIRST FLOOR

Landing
Bedroom 1: 14'3 x 8'0 (4.35m x 2.44m)
Bedroom 2: 13'7 x 9'5 (4.14m x 2.87m)
Bedroom 3: 11'8 x 9'4 (3.56m x 2.85m)
Bedroom 4: 10'11 x 8'9 (3.33m x 2.67m)
Family Bathroom: 7'8 x 5'4 (2.34m x 1.63m)

OUTSIDE

Driveway
Front Garden
Rear Garden
Brick Built Shed
Out Building: 14'11 x 10'11 (4.55m x 3.33m)



Main features

- Delightful terraced house with driveway
- Gorgeous sociable garden with bar, perfect for summer
- Sociable kitchen/diner, ideal for busy families
- Schools, shops and leisure centre within easy reach
- Excellent commuter links and Dartford station nearby



Nearest Schools

Primary Schools: St Anselm's Catholic Primary 0.3 miles, Temple Hill Community Primary and Nursery School 0.3 miles, Holy Trinity C of E Primary, Dartford 1.2 miles
Secondary Schools: The Leigh Technology Academy 1.4 miles, Dartford Grammar School 1.8 miles



Transport Information

Train Stations: Dartford 1.5 miles, Stone Crossing 2.5 miles, Crayford 2.5 miles



Address

Henderson Drive, Dartford, Kent, DA1



Directions

For directions to this property please contact us.



Wards
Helping you move forwards

Call Dartford Branch 01322 288211 ■ wardsofkent.co.uk



■ Legal advice should be taken to verify fixtures/fittings, planning, alterations and/or lease details ■ Appliances & services are untested, dimensions are approximate and floor plans are not to scale
■ Through a Homewise Home For Life Plan people aged 60+ can secure this property for up to 59% less, by purchasing a Lifetime Lease.



10545999/20250426/MP/LH