



Price
£425,000

Freehold

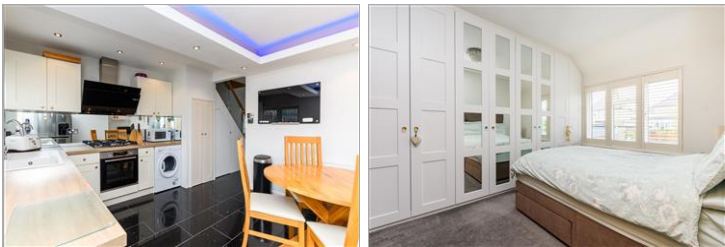
3x  1x  1x 

**Ashen Drive, Dartford,
Kent, DA1**

OVER 60?

Secure this property
for up to **59% less!**

Wards
Helping you move forwards



Main features

- Delightful terraced house ideal starter home
- Handy driveway for 2 cars
- Beautifully presented throughout
- Sociable kitchen/diner ideal for busy family mornings
- Ideal for great local primary and Grammar schools as well as "zone 6" Crayford train station

Accommodation

GROUND FLOOR

Hallway

Lounge: 13'0 x 9'6 (3.97m x 2.90m)

Kitchen/Diner: 15'0 x 12'3 (4.58m x 3.74m)

FIRST FLOOR

Landing

Bedroom 1: 11'9 x 11'8 (3.58m x 3.56m)

Bedroom 2: 10'8 x 9'4 (3.25m x 2.85m)

Bedroom 3: 6'10 x 6'6 (2.08m x 1.98m)

Family Bathroom: 6'0 x 5'9 (1.83m x 1.75m)

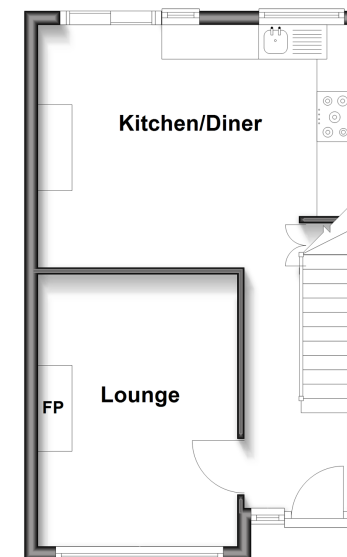
OUTSIDE

Driveway

Rear Garden

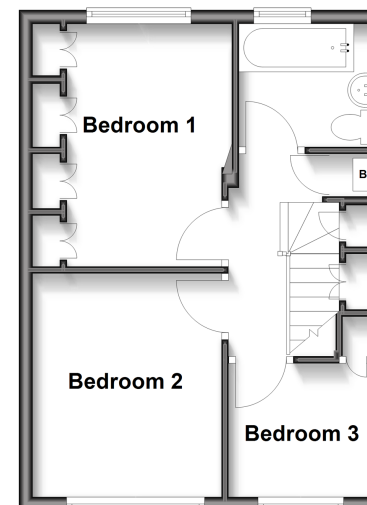
Ground Floor

Approx. 33.9 sq. metres (364.6 sq. feet)



First Floor

Approx. 34.7 sq. metres (374.0 sq. feet)



Call Dartford - 01322 288211 ■ wardsofkent.co.uk

- Legal advice should be taken to verify fixtures/fittings, planning, alterations and/or lease details
- Appliances & services are untested, dimensions are approximate and floor plans are not to scale
- Through a Homewise Home For Life Plan people aged 60+ can secure this property for up to 59% less, by purchasing a Lifetime Lease.



10537272/20250430/MP/LH