



**OVER 60?**

Secure this property  
for up to **59% less!**

**Price**

**£325,000**

**Leasehold**

2x  2x  1x 

**James Smith Court,  
Dartford, Kent, DA1**

*Wards*  
Helping you move forwards





## Main features

- Third floor flat with balcony overlooking communal gardens
- Secure underground allocated parking space
- High specification kitchen with built in appliances
- Immaculately presented
- Ideal for commuters as the station and town centre are close by

## Accommodation

### THIRD FLOOR

#### Hallway

Lounge/Kitchen: 23'5 (7.14m) narrowing to 15'5 (4.70m) x 11'4 narrowing to (3.46m)

#### Balcony

Bedroom 2: 12'5 x 8'6 (3.79m x 2.59m)

Bedroom 1: 16'6 x 8'10 (5.03m x 2.69m)

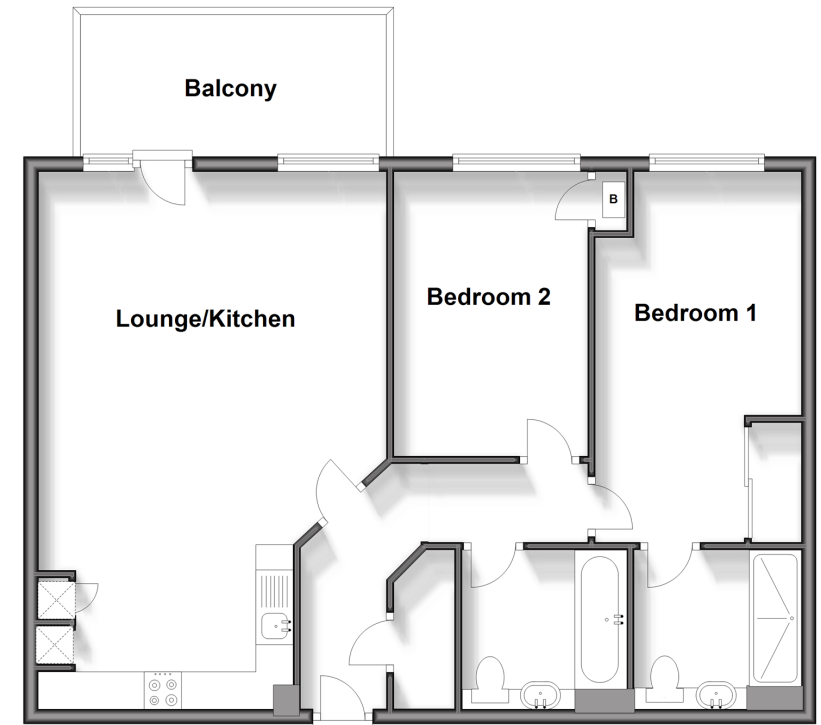
En-suite Shower Room  
Bathroom

### OUTSIDE

Underground Parking Space  
Communal Gardens

### Third Floor

Approx. 73.8 sq. metres (794.8 sq. feet)



Call Dartford - 01322 288211 ■ [wardsofkent.co.uk](http://wardsofkent.co.uk)

- Legal advice should be taken to verify fixtures/fittings, planning, alterations and/or lease details
- Appliances & services are untested, dimensions are approximate and floor plans are not to scale
- Through a Homewise Home For Life Plan people aged 60+ can secure this property for up to 59% less, by purchasing a Lifetime Lease.



10545374/20250426/MP/LH