



**Price**  
**£400,000**

**Freehold**

2x  1x  1x 

**Warren Road, Dartford,  
Kent, DA1**

*Wards*  
Helping you move forwards





## Main features

- Substantial semi-detached bungalow with conservatory
- Offered with no onward chain
- Close proximity to local amenities
- Short drive to Dartford town centre and railway station
- Easy access out of Dartford via local motorway network

## Accommodation

### GROUND FLOOR

Entrance Porch

Bedroom 2: 10'2 x 7'9 (3.10m x 2.36m)

Bedroom 1: 12'3 x 12'0 (3.74m x 3.66m)

Shower Room: 7'8 x 5'4 (2.34m x 1.63m)

Lounge: 12'0 x 11'9 (3.66m x 3.58m)

Dining Area: 10'6 x 8'7 (3.20m x 2.62m)

Conservatory: 11'0 x 10'4 (3.36m x 3.15m)

Kitchen: 13'6 x 8'8 (4.12m x 2.64m)

Lean-To

Bathroom

### OUT BUILDING

Garage: 20'2 x 8'8 (6.15m x 2.64m)

### OUTSIDE

Driveway

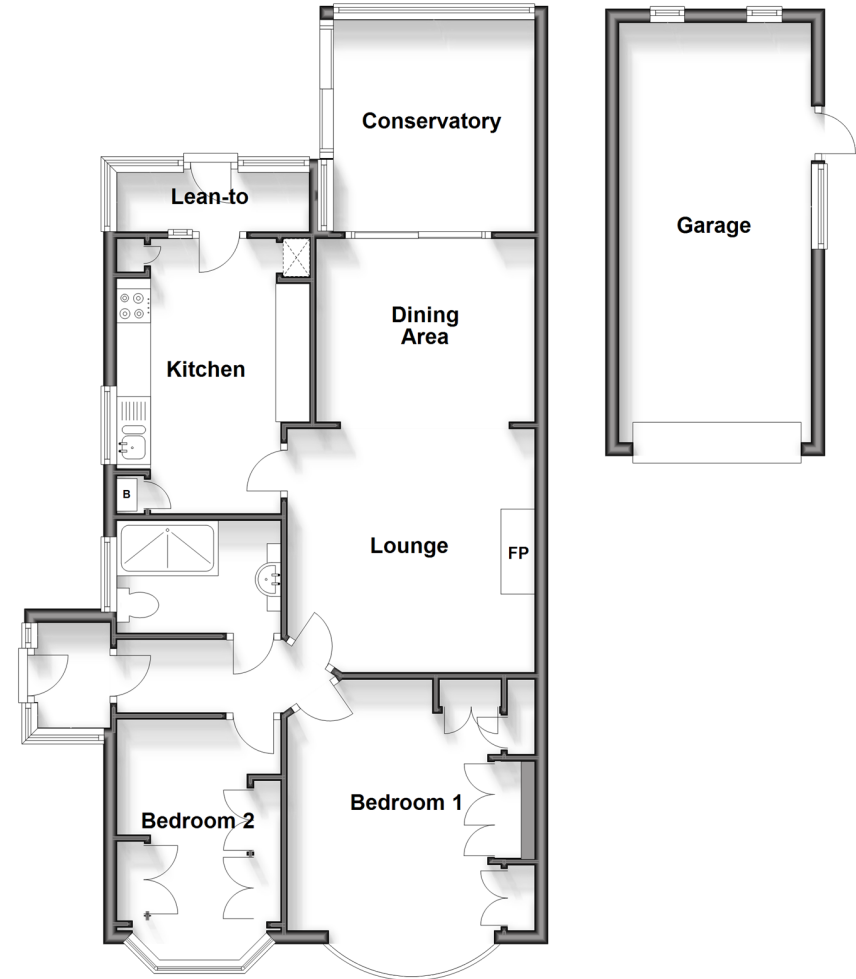
Rear Garden

### Ground Floor

Approx. 77.8 sq. metres (837.0 sq. feet)

### Outbuilding

Approx. 16.8 sq. metres (181.0 sq. feet)



**Call Dartford - 01322 288211 ■ [wardsofkent.co.uk](http://wardsofkent.co.uk)**

- Legal advice should be taken to verify fixtures/fittings, planning, alterations and/or lease details
- Appliances & services are untested, dimensions are approximate and floor plans are not to scale