



Guide Price
£325,000

Freehold

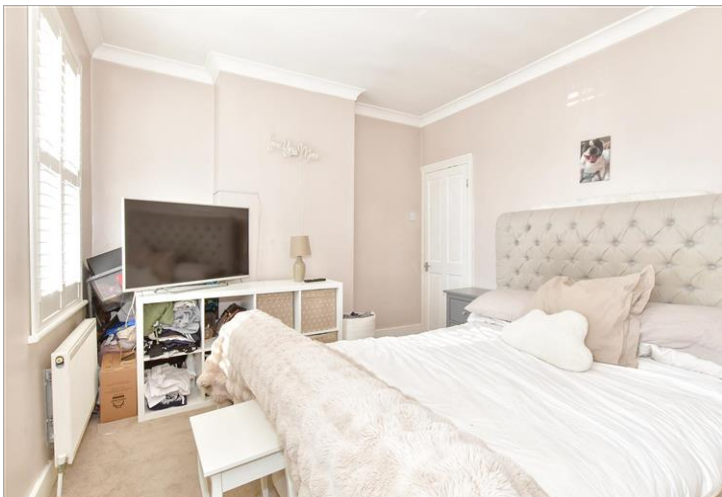
3x  1x  2x 

**Fulwich Road, Dartford,
Kent, DA1**

OVER 60?

Secure this property
for up to **59% less!**

Wards
Helping you move forwards



Main features

- Lovely terraced house
- Spacious kitchen
- Modern throughout
- Nice size garden
- Walking distance of Dartford train station

Accommodation

GROUND FLOOR

Hallway

Lounge: 13'9 x 10'9 (4.19m x 3.28m)

Dining Room: 14'2 x 10'4 (4.32m x 3.15m)

Kitchen: 14'0 x 5'0 (4.27m x 1.53m)

FIRST FLOOR

Landing

Bedroom 1: 14'1 x 10'7 (4.30m x 3.23m)

Bedroom 2: 10'5 x 5'3 (3.18m x 1.60m)

Bedroom 3: 8'2 x 7'7 (2.49m x 2.31m)

Bathroom

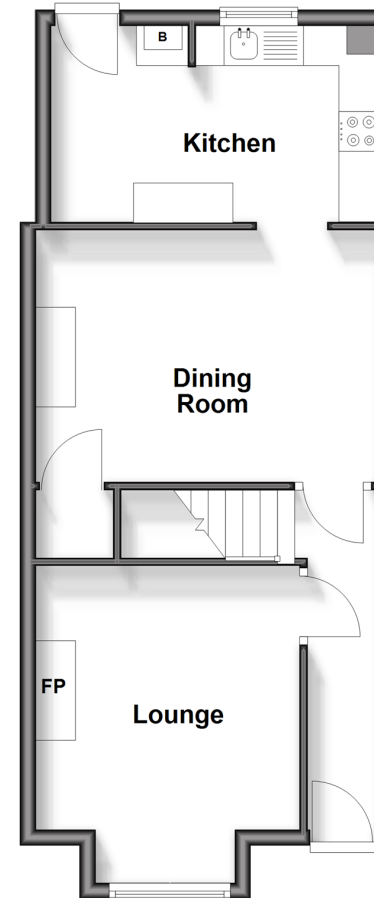
OUTSIDE

Front Garden

Rear Garden

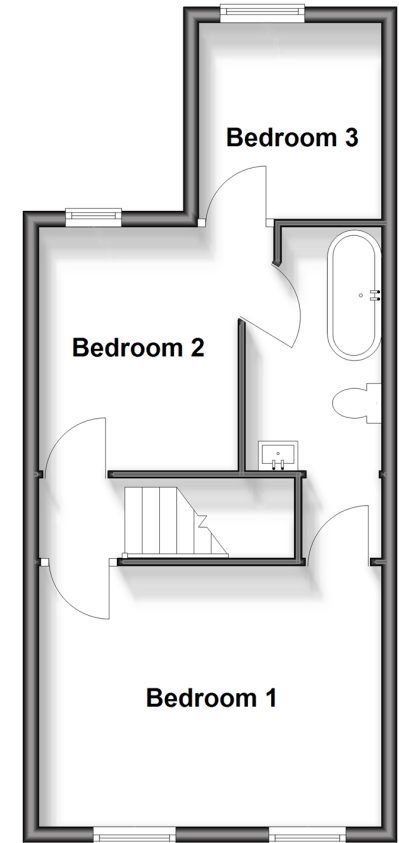
Ground Floor

Approx. 44.3 sq. metres (477.0 sq. feet)



First Floor

Approx. 38.5 sq. metres (413.9 sq. feet)



Call Dartford - 01322 288211 ■ wardsofkent.co.uk

- Legal advice should be taken to verify fixtures/fittings, planning, alterations and/or lease details
- Appliances & services are untested, dimensions are approximate and floor plans are not to scale
- Through a Homewise Home For Life Plan people aged 60+ can secure this property for up to 59% less, by purchasing a Lifetime Lease.



10545951/20250407/LH/NO