



Price
£500,000

Freehold

3x  2x  2x 

**Swanscombe Street,
Swanscombe, Kent,
DA10**

OVER 60?

Secure this property
for up to **59% less!**

Wards
Helping you move forwards



Main features

- Detached extended house
- Flexible living accommodation
- Downstairs bathroom and separate upstairs shower room
- Conservatory
- Walking distance of shops and schools

Accommodation

GROUND FLOOR

Entrance Porch

Entrance Hall: 10'8 x 8'4 (3.25m x 2.54m)

Lounge 1: 13'1 x 13'1 (3.99m x 3.99m)

Conservatory: 13'4 x 9'9 (4.07m x 2.97m)

Kitchen: 12'0 x 10'0 (3.66m x 3.05m)

Bathroom

Study: 10'8 x 5'4 (3.25m x 1.63m)

Dining Room: 13'9 x 12'1 (4.19m x 3.69m)

FIRST FLOOR

Landing

Bedroom 2: 12'5 x 12'3 (3.79m x 3.74m)

Shower Room: 7'8 x 5'3 (2.34m x 1.60m)

Bedroom 1: 17'10 x 12'0 (5.44m x 3.66m)

OUTSIDE

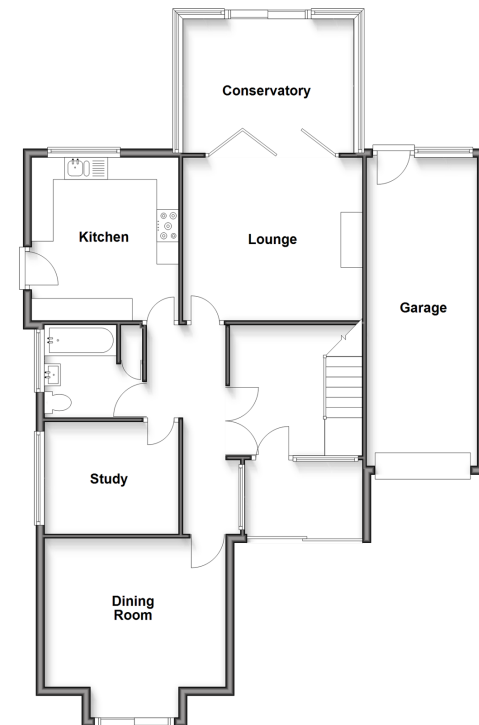
Front Garden

Driveway

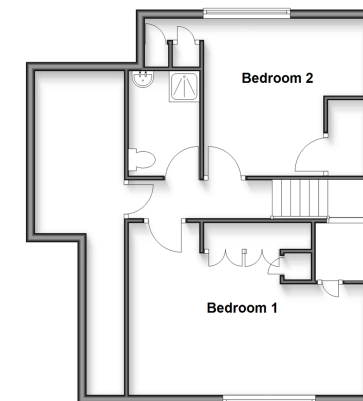
Garage

Rear Garden

Ground Floor
Approx. 111.1 sq. metres (1195.7 sq. feet)



First Floor
Approx. 57.9 sq. metres (623.1 sq. feet)



Call Dartford - 01322 288211 ■ wardsofkent.co.uk

- Legal advice should be taken to verify fixtures/fittings, planning, alterations and/or lease details
- Appliances & services are untested, dimensions are approximate and floor plans are not to scale
- Through a Homewise Home For Life Plan people aged 60+ can secure this property for up to 59% less, by purchasing a Lifetime Lease.



10545905/20250221/LH/NO