



Guide Price
£400,000

Freehold

3x  1x  2x 

**Burnham Road,
Dartford, Kent, DA1**

OVER 60?

Secure this property
for up to **59% less!**

Wards
Helping you move forwards



Main features

- Well presented semi-detached house
- Extended kitchen area
- Walking distance of Dartford train station
- Parking for several cars
- Surrounded by several excellent schools to choose from

Accommodation

GROUND FLOOR

Hallway

Lounge: 11'11 x 11'10 (3.63m x 3.61m)

Dining Area: 12'6 x 11'6 (3.81m x 3.51m)

Kitchen: 18'8 x 6'9 (5.69m x 2.06m)

FIRST FLOOR

Landing

Bedroom 3: 6'9 x 6'7 (2.06m x 2.01m)

Bedroom 1: 11'9 x 9'8 (3.58m x 2.95m)

Bedroom 2: 10'3 x 8'8 (3.13m x 2.64m)

Bathroom: 6'11 x 5'6 (2.11m x 1.68m)

OUTSIDE

Driveway

Garage

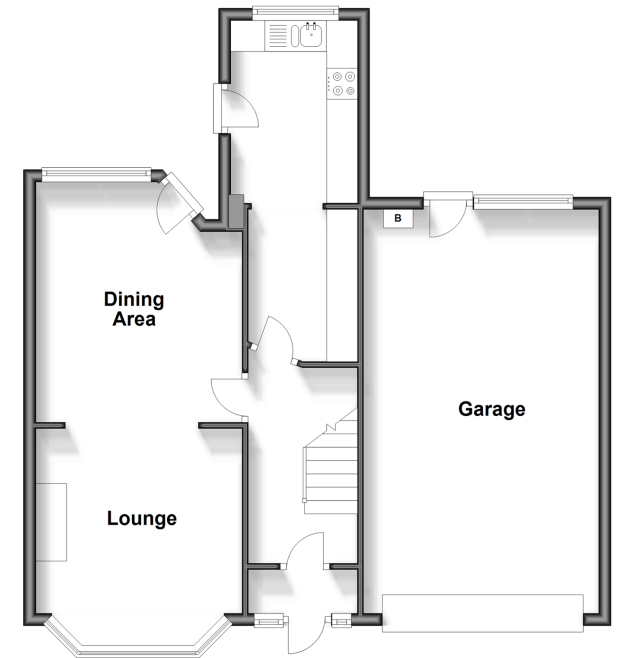
Front Garden

Rear Garden

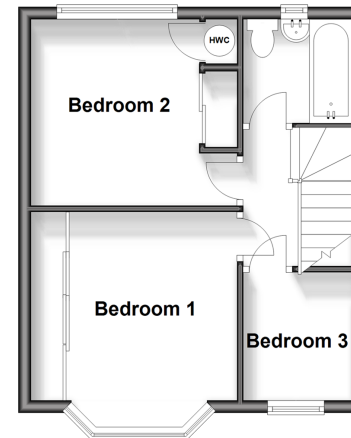
Call Dartford - 01322 288211 ■ wardsofkent.co.uk

- Legal advice should be taken to verify fixtures/fittings, planning, alterations and/or lease details
- Appliances & services are untested, dimensions are approximate and floor plans are not to scale
- Through a Homewise Home For Life Plan people aged 60+ can secure this property for up to 59% less, by purchasing a Lifetime Lease.

Ground Floor
Approx. 66.8 sq. metres (719.1 sq. feet)



First Floor
Approx. 32.6 sq. metres (351.3 sq. feet)



10545810/20250312/CM/NO