



**Price**  
**£410,000**

**Freehold**

3x  1x  1x 

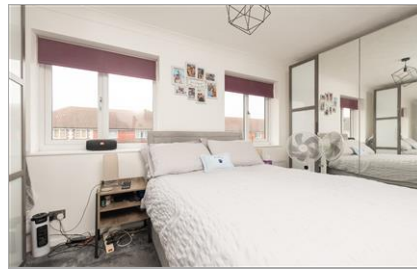
**McCudden Road,  
Dartford, Kent, DA1**

**OVER 60?**

Secure this property  
for up to **59% less!**

*Wards*  
Helping you move forwards





## Main features

- **Lovely semi-detached house on a modern development**
- **Open plan lounge/diner**
- **Upstairs bathroom as well as downstairs cloakroom**
- **Modernised throughout**
- **Situated close by to bus links and local schools**

## Accommodation

### GROUND FLOOR

- Hallway
- Cloakroom
- Kitchen: 8'1 x 7'5 (2.47m x 2.26m)
- Lounge/Diner: 17'2 x 14'7 (5.24m x 4.45m)

### FIRST FLOOR

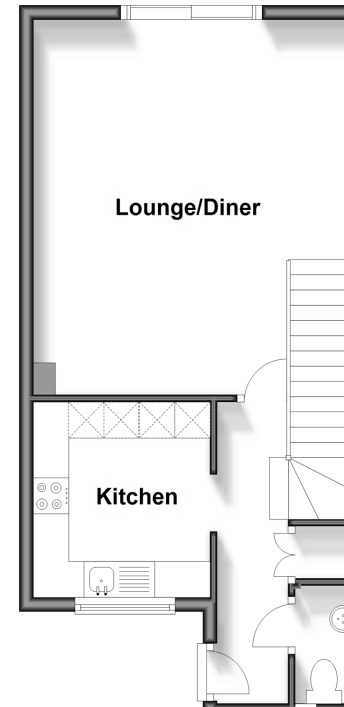
- Landing
- Bedroom 1: 13'7 x 9'2 (4.14m x 2.80m)
- Bedroom 2: 10'5 x 8'5 (3.18m x 2.57m)
- Bedroom 3: 7'6 x 5'8 (2.29m x 1.73m)
- Bathroom

### OUTSIDE

- Front Garden
- Rear Garden
- Two Allocated Parking Spaces

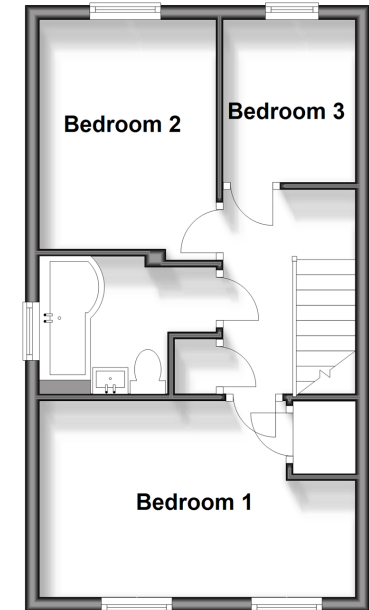
### Ground Floor

Approx. 38.7 sq. metres (416.5 sq. feet)



### First Floor

Approx. 36.0 sq. metres (387.2 sq. feet)



**Call Dartford - 01322 288211 ■ [wardsof Kent.co.uk](http://wardsof Kent.co.uk)**

■ Legal advice should be taken to verify fixtures/fittings, planning, alterations and/or lease details  
 ■ Through a Homewise Home For Life Plan people aged 60+ can secure this property for up to 59% less, by purchasing a Lifetime Lease.

■ Appliances & services are untested, dimensions are approximate and floor plans are not to scale



10545800/20241017/CM/NO