



**Price**  
**£450,000**

**Freehold**

3x  1x  2x 

**Oakfield Park Road,  
Dartford, Kent, DA1**

**OVER 60?**

Secure this property  
for up to **59% less!**

*Wards*  
Helping you move forwards



## Main features

- Extended end of terrace house
- Kitchen/dining area ideal for entertaining
- Additional reception room that can be a play room or bedroom
- Open plan lounge/diner
- Situated on the popular Oakfield Park Road

## Accommodation

### GROUND FLOOR

Hallway

Study: 7'5 x 6'3 (2.26m x 1.91m)

Lounge Area: 12'0 x 10'3 (3.66m x 3.13m)

Dining Area: 11'6 x 8'5 (3.51m x 2.57m)

Kitchen: 14'4 x 9'4 (4.37m x 2.85m)

### FIRST FLOOR

Landing

Bedroom 1: 12'1 x 10'5 (3.69m x 3.18m)

Bedroom 2: 9'4 x 5'9 (2.85m x 1.75m)

Bedroom 3: 11'1 x 10'1 (3.38m x 3.08m)

Bathroom

### OUT BUILDING

Garage

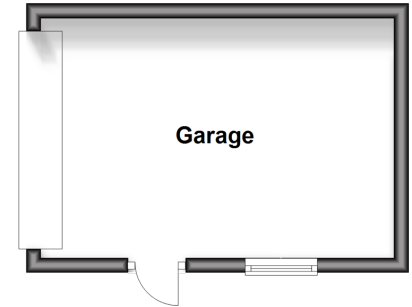
### OUTSIDE

Driveway

Rear Garden

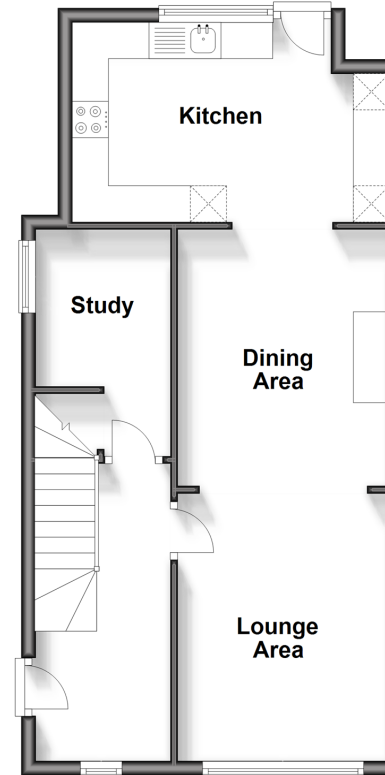
### Outbuilding

Approx. 16.0 sq. metres (171.9 sq. feet)



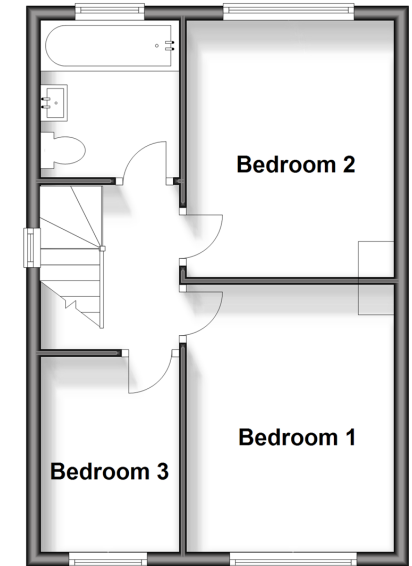
### Ground Floor

Approx. 47.9 sq. metres (515.3 sq. feet)



### First Floor

Approx. 36.0 sq. metres (387.7 sq. feet)



**Call Dartford - 01322 288211 ■ [wardsofkent.co.uk](http://wardsofkent.co.uk)**

- Legal advice should be taken to verify fixtures/fittings, planning, alterations and/or lease details
- Appliances & services are untested, dimensions are approximate and floor plans are not to scale
- Through a Homewise Home For Life Plan people aged 60+ can secure this property for up to 59% less, by purchasing a Lifetime Lease.



10545790/20241205/CM/NO