



Price
£360,000

Freehold

2x  1x  1x 

**Wheatley Close,
Greenhithe, Kent, DA9**

OVER 60?

Secure this property
for up to **59% less!**

Wards
Helping you move forwards



Main features

- Semi-detached house in Worcester Park
- Landscaped rear garden on a corner plot
- Modern fitted kitchen and bathroom
- Walking distance to Greenhithe train station
- Perfect first time buy/investment

Accommodation

GROUND FLOOR

Entrance Hallway

Lounge: 14'3 x 11'7 (4.35m x 3.53m)

Kitchen: 11'7 x 8'4 (3.53m x 2.54m)

Conservatory: 9'2 x 8'3 (2.80m x 2.52m)

FIRST FLOOR

Landing

Bedroom 1: 9'3 x 8'11 (2.82m x 2.72m)

Bedroom 2: 10'9 x 6'3 (3.28m x 1.91m)

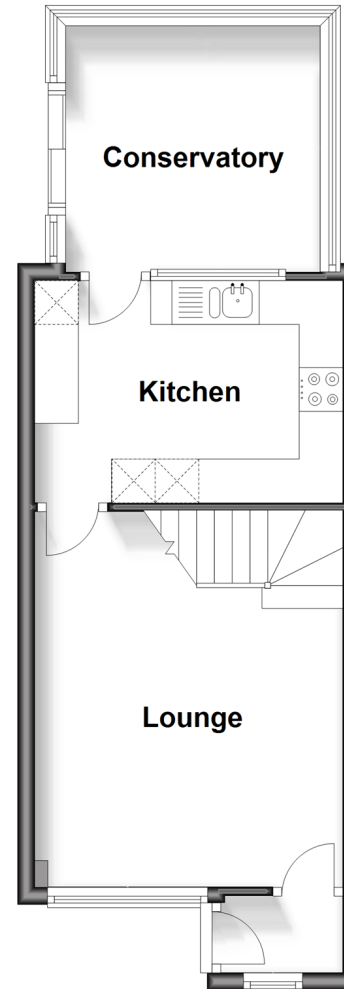
Bathroom: 8'0 x 4'11 (2.44m x 1.50m)

OUTSIDE

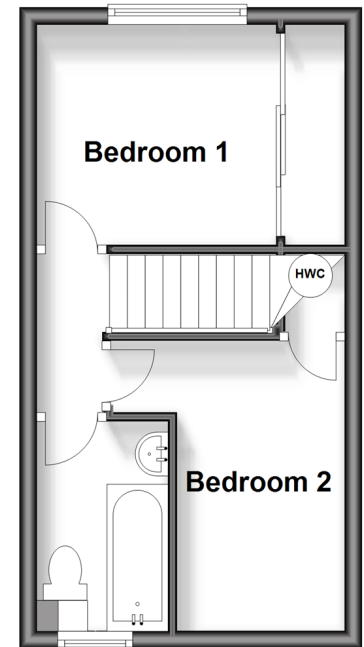
Parking

Rear Garden

Ground Floor
Approx. 34.3 sq. metres (368.8 sq. feet)



First Floor
Approx. 24.5 sq. metres (263.2 sq. feet)



Call Dartford - 01322 288211 ■ wardsofkent.co.uk

- Legal advice should be taken to verify fixtures/fittings, planning, alterations and/or lease details
- Appliances & services are untested, dimensions are approximate and floor plans are not to scale
- Through a Homewise Home For Life Plan people aged 60+ can secure this property for up to 59% less, by purchasing a Lifetime Lease.



10545776/20241116/MP/NO