



OVER 60?

Secure this property
for up to **59% less!**

Price

£400,000

Freehold

3x  1x  2x 

**Park Road, Dartford,
Kent, DA1**

Wards
Helping you move forwards



Main features

- Semi-detached period house with conservatory
- Garage and shared driveway
- Delightful lounge/dining area
- Separate upstairs bathroom
- Walking distance of shops and local schools

Accommodation

GROUND FLOOR

Porch
Hallway
Lounge: 20'5 x 10'8 (6.23m x 3.25m)
Kitchen: 11'6 x 9'2 (3.51m x 2.80m)
Conservatory: 10'7 x 9'8 (3.23m x 2.95m)

FIRST FLOOR

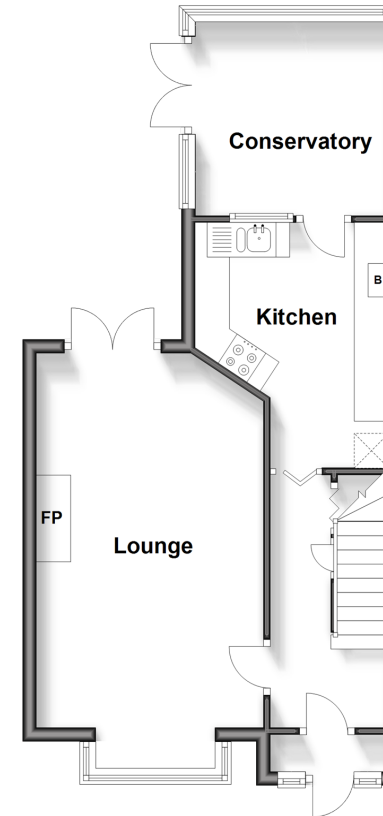
Landing
Bedroom 1: 11'9 x 9'3 (3.58m x 2.82m)
Bedroom 2: 11'5 x 8'7 (3.48m x 2.62m)
Bedroom 3: 9'9 x 7'8 (2.97m x 2.34m)
Bathroom: 8'2 x 7'10 (2.49m x 2.39m)

OUTSIDE

Front Garden
Shared Driveway
Rear Garden
Garage

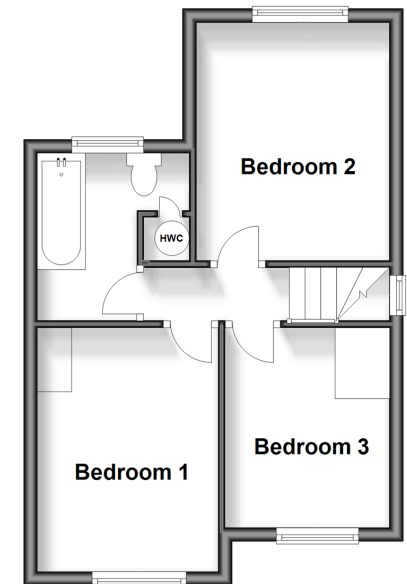
Ground Floor

Approx. 42.7 sq. metres (459.2 sq. feet)



First Floor

Approx. 34.6 sq. metres (372.5 sq. feet)



Call Dartford - 01322 288211 ■ wardsofkent.co.uk

- Legal advice should be taken to verify fixtures/fittings, planning, alterations and/or lease details
- Appliances & services are untested, dimensions are approximate and floor plans are not to scale
- Through a Homewise Home For Life Plan people aged 60+ can secure this property for up to 59% less, by purchasing a Lifetime Lease.



10545771/20250122/LH/NO