



Price
£425,000

Freehold

3x  1x  2x 

**Park Road, Dartford,
Kent, DA1**

OVER 60?

Secure this property
for up to **59% less!**

Wards
Helping you move forwards



Main features

- Semi-detached period house with conservatory
- Garage and shared driveway
- Delightful lounge/dining area
- Separate upstairs bathroom
- Walking distance of shops and local schools

Accommodation

GROUND FLOOR

- Porch
- Hallway
- Lounge: 20'5 x 10'8 (6.23m x 3.25m)
- Kitchen: 11'6 x 9'2 (3.51m x 2.80m)
- Conservatory: 10'7 x 9'8 (3.23m x 2.95m)

FIRST FLOOR

- Landing
- Bedroom 1: 11'9 x 9'3 (3.58m x 2.82m)
- Bedroom 2: 11'5 x 8'7 (3.48m x 2.62m)
- Bedroom 3: 9'9 x 7'8 (2.97m x 2.34m)
- Bathroom: 8'2 x 7'10 (2.49m x 2.39m)

OUTSIDE

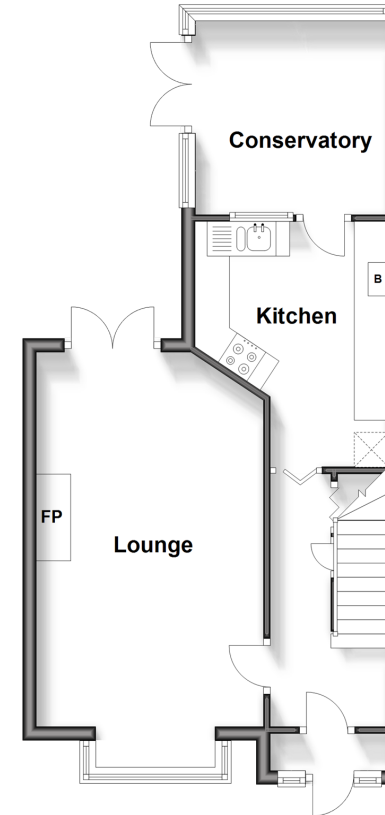
- Front Garden
- Shared Driveway
- Rear Garden
- Garage

Call Dartford - 01322 288211 ■ wardsofkent.co.uk

- Legal advice should be taken to verify fixtures/fittings, planning, alterations and/or lease details
- Appliances & services are untested, dimensions are approximate and floor plans are not to scale
- Through a Homewise Home For Life Plan people aged 60+ can secure this property for up to 59% less, by purchasing a Lifetime Lease.

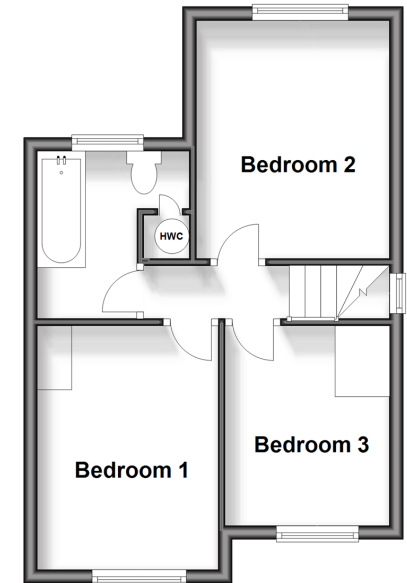
Ground Floor

Approx. 42.7 sq. metres (459.2 sq. feet)



First Floor

Approx. 34.6 sq. metres (372.5 sq. feet)



10545771/20240930/MP/NO