



Price
£375,000

Freehold

3x  1x  2x 

**Colney Road, Dartford,
Kent, DA1**

OVER 60?

Secure this property
for up to **59% less!**

Wards

Helping you move forwards



Main features

- Beautiful semi-detached period house
- Open plan kitchen/diner
- Downstairs bathroom
- Modernised throughout
- Walking distance to Dartford train station and town centre

Accommodation

GROUND FLOOR

Entrance Hallway

Living Room: 11'9 x 11'8 (3.58m x 3.56m)

Dining Area: 14'9 x 12'0 (4.50m x 3.66m)

Kitchen: 11'0 x 7'3 (3.36m x 2.21m)

Bathroom: 6'9 x 5'4 (2.06m x 1.63m)

FIRST FLOOR

Landing

Bedroom 1: 11'9 x 11'8 (3.58m x 3.56m)

Bedroom 2: 12'0 x 8'9 (3.66m x 2.67m)

Bedroom 3: 12'4 x 7'4 (3.76m x 2.24m)

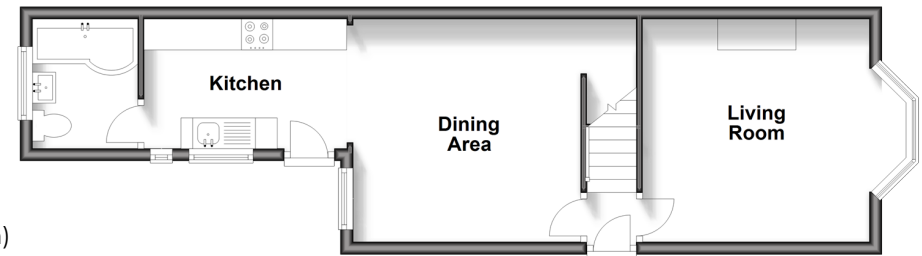
OUTSIDE

Front Garden

Rear Garden

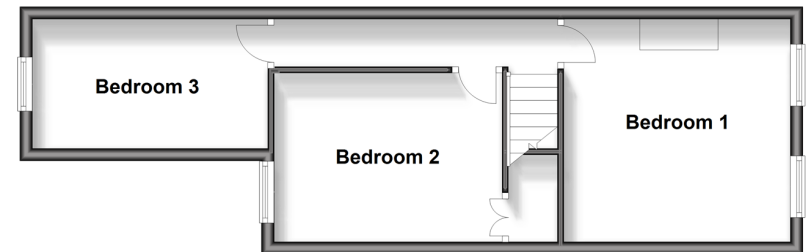
Ground Floor

Approx. 41.3 sq. metres (444.3 sq. feet)



First Floor

Approx. 37.9 sq. metres (407.8 sq. feet)



Call Dartford - 01322 288211 ■ wardsofkent.co.uk

- Legal advice should be taken to verify fixtures/fittings, planning, alterations and/or lease details
- Appliances & services are untested, dimensions are approximate and floor plans are not to scale
- Through a Homewise Home For Life Plan people aged 60+ can secure this property for up to 59% less, by purchasing a Lifetime Lease.



10545664/20241014/MP/NO