



Price
£375,000

Freehold

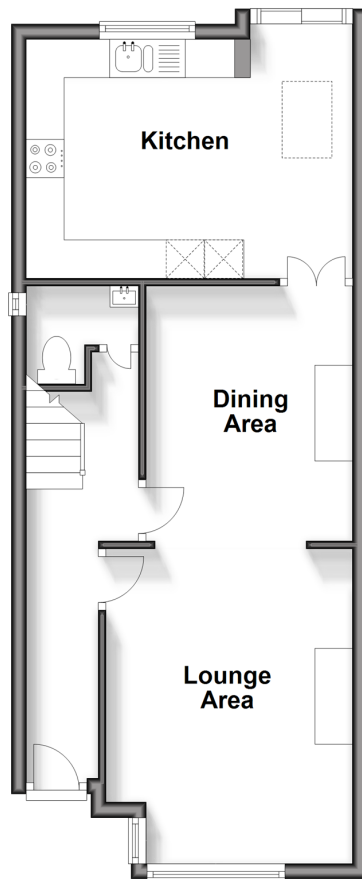
3x  1x  2x 

**London Road,
Greenhithe, Kent, DA9**

Wards
Helping you move forwards

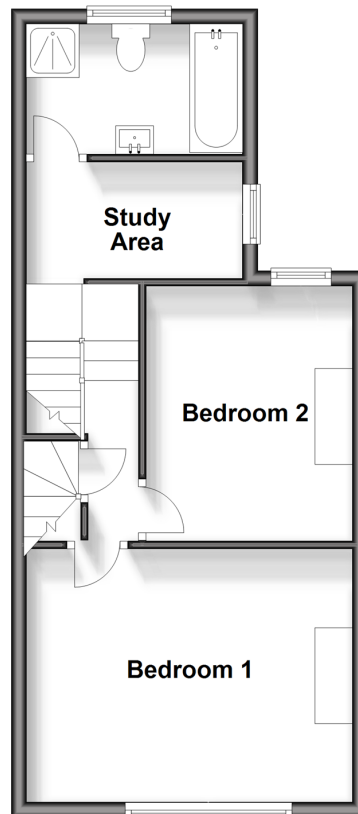
Ground Floor

Approx. 45.0 sq. metres (484.8 sq. feet)



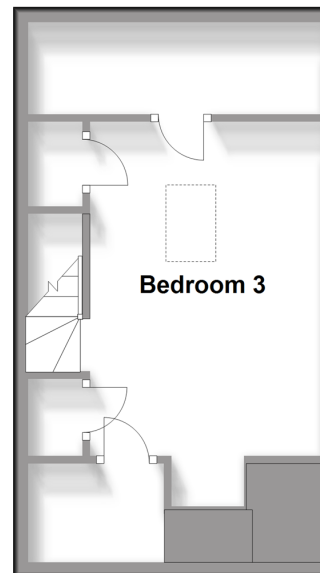
First Floor

Approx. 38.6 sq. metres (415.9 sq. feet)



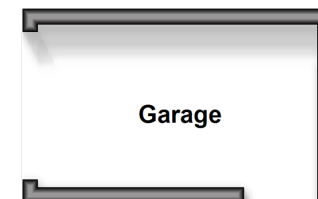
Second Floor

Approx. 27.4 sq. metres (294.8 sq. feet)



Outbuilding

Approx. 7.9 sq. metres (84.8 sq. feet)



Accommodation

GROUND FLOOR

Entrance Hall

Cloakroom

Lounge Area: 13'5 x 10'7 (4.09m x 3.23m)

Dining Area : 10'8 x 8'8 (3.25m x 2.64m)

Kitchen : 14'1 x 11'3 (4.30m x 3.43m)

FIRST FLOOR

Landing

Bedroom 1: 14'11 x 9'9 (4.55m x 2.97m)

Bedroom 2: 14'2 x 11'0 (4.32m x 3.36m)

Study Area : 8'9 x 5'0 (2.67m x 1.53m)

Bathroom

SECOND FLOOR

Bedroom 3: 10'9 x 8'8 (3.28m x 2.64m)

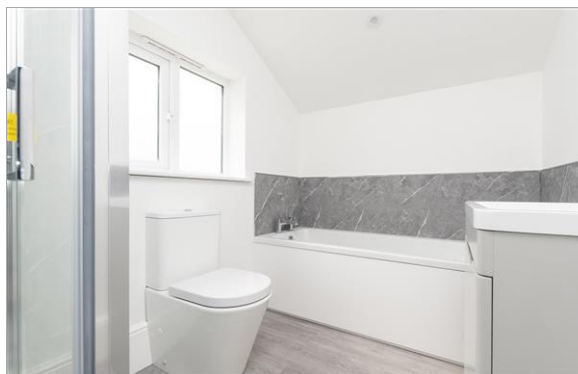
OUTBUILDING

Garage

OUTSIDE

Front Garden

Rear Garden



Main features

- Charming end of terrace house
- Beautifully refurbished throughout
- Extended open plan living, perfect for entertaining
- Detached garage for storage
- Offered for sale with no forward chain offering peace of mind



Nearest Schools

Primary Schools: Knockhall Community Primary 0.3 miles, The Craylands School 0.8 miles, Stone St Mary's CofE Primary 1.5 miles
Secondary Schools: Swan Valley Community School 1.7 miles, Northfleet Technology College 3.3 miles



Transport Information

Train Stations: Greenhithe 0.8 miles, Swanscombe 1.0 miles, Stone Crossing 1.2 miles



Address

London Road, Greenhithe, Kent, DA9



Directions

For directions to this property please contact us.



Call Dartford Branch 01322 288211 ■ wardsofkent.co.uk



■ Legal advice should be taken to verify fixtures/fittings, planning, alterations and/or lease details ■ Appliances & services are untested, dimensions are approximate and floor plans are not to scale



10545692/20250504/MP/LH