



OVER 60?

Secure this property
for up to **59% less!**

Guide Price
£250,000

Leasehold

2x  2x  1x 

**Malt Kiln Place,
Dartford, Kent, DA2**

Wards
Helping you move forwards



Main features

- **Fantastic second floor (top floor) flat**
- **Outside terrace balcony with views**
- **Two double bedrooms and two bathrooms**
- **Contemporary kitchen with integrated appliances**
- **Large entrance hall and open plan living**

Accommodation

SECOND FLOOR

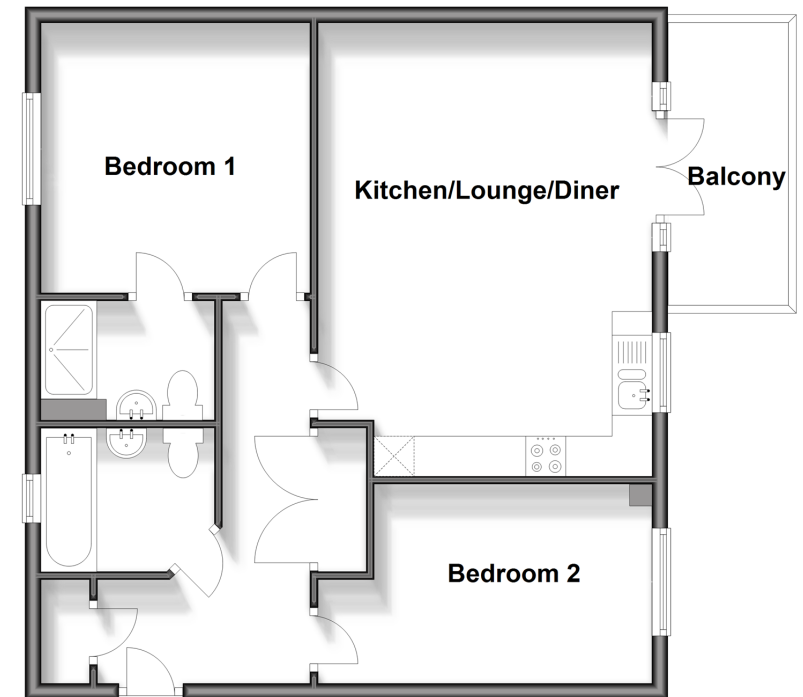
Entrance Hall
 Kitchen/Lounge/Diner: 18'3 x 13'6 (5.57m x 4.12m)
 Balcony
 Bedroom 1: 11'11 x 11'0 (3.63m x 3.36m)
 En-suite Shower Room
 Bedroom 2: 11'6 x 8'6 (3.51m x 2.59m)
 Bathroom

OUTSIDE

Allocated parking space

Second Floor

Approx. 63.1 sq. metres (679.3 sq. feet)



Call Dartford - 01322 288211 ■ wardsofkent.co.uk

■ Legal advice should be taken to verify fixtures/fittings, planning, alterations and/or lease details
 ■ Through a Homewise Home For Life Plan people aged 60+ can secure this property for up to 59% less, by purchasing a Lifetime Lease.

■ Appliances & services are untested, dimensions are approximate and floor plans are not to scale



10545669/20250222/LH/RM