



**Price**  
**£525,000**

**Freehold**

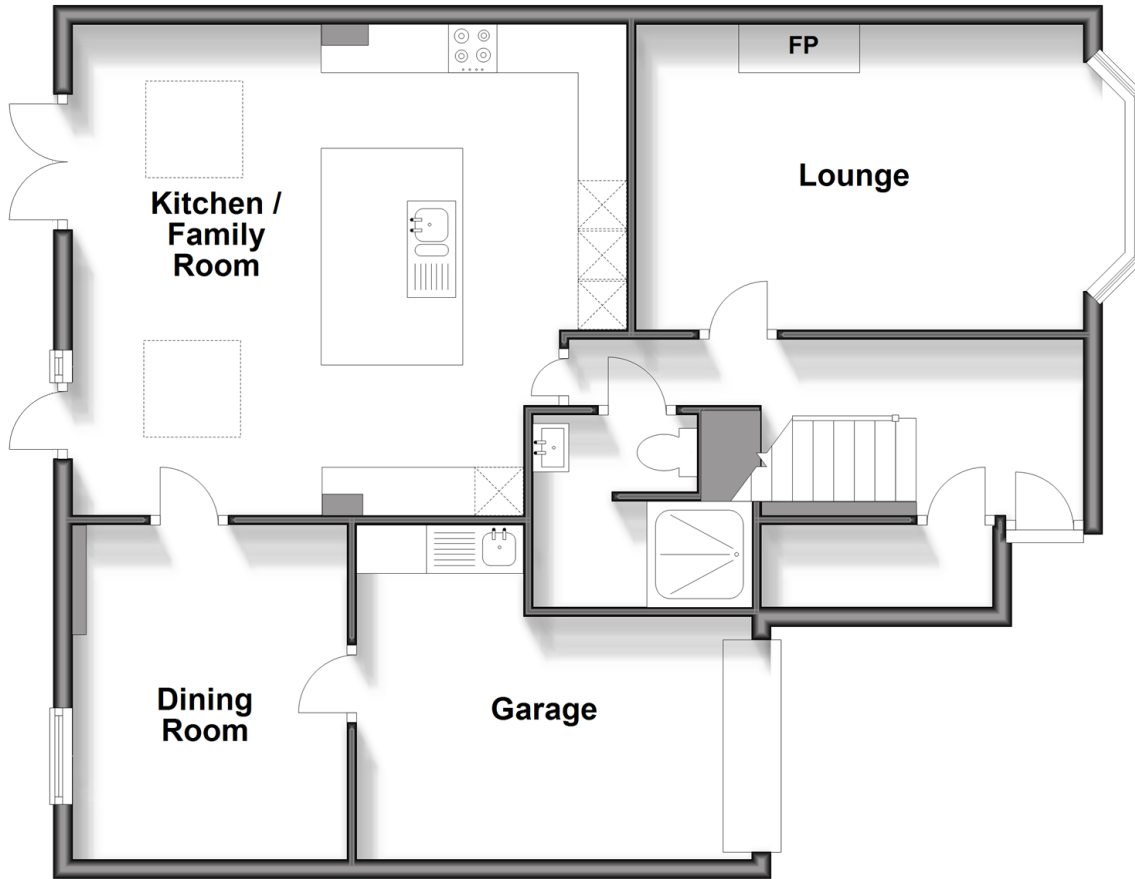
3x  1x  1x 

**Cedar Drive, Sutton At  
Hone, Dartford, Kent,  
DA4**

*Wards*  
Helping you move forwards

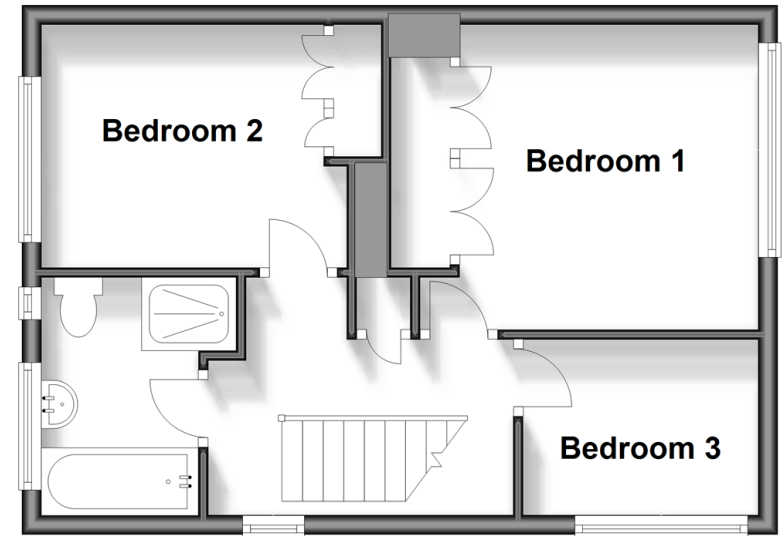
## Ground Floor

Approx. 80.9 sq. metres (870.5 sq. feet)



## First Floor

Approx. 37.9 sq. metres (408.3 sq. feet)



## Accommodation

### GROUND FLOOR

Entrance Hallway

Shower Room

Lounge: 15'2 x 10'4 (4.63m x 3.15m)

Kitchen/Family Room: 16'7 x 16'7  
(5.06m x 5.06m)

Dining Room: 11'4 x 9'3 (3.46m x  
2.82m)

### FIRST FLOOR

Landing

Bathroom: 7'7 x 5'3 (2.31m x 1.60m)

Bedroom 2: 10'5 x 8'7 (3.18m x 2.62m)

Bedroom 1: 11'3 x 10'2 (3.43m x 3.10m)

Bedroom 3: 7'9 x 6'3 (2.36m x 1.91m)

### OUTSIDE

Front Garden

Driveway

Garage: 12'8 x 11'5 (3.86m x 3.48m)

Rear Garden



## Main features

- Extended semi-detached house
- Garage and driveway parking
- Large garden
- Fantastic family orientated area within a great school catchment location
- Short drive to Dartford town centre or motorway network



### Nearest Schools

Primary Schools: Sutton-at-Hone CofE Primary 0.8 miles, Horton Kirby C of E Primary 1.0 miles, Darenth Community Primary 2.2 miles

Secondary Schools: Hextable School 2.7 miles, The



### Transport Information

Train Stations: Farningham Road 0.3 miles, Stone Crossing 3.3 miles, Longfield 3.4 miles



### Address

Cedar Drive, Sutton At Hone, Dartford, Kent, DA4



### Directions

For directions to this property please contact us.



**Wards**  
Helping you move forwards

Call Dartford Branch 01322 288211 ■ [wardsofkent.co.uk](http://wardsofkent.co.uk)



■ Legal advice should be taken to verify fixtures/fittings, planning, alterations and/or lease details ■ Appliances & services are untested, dimensions are approximate and floor plans are not to scale



10538538/20240720/MP/PP