



Price
£425,000

Freehold

2x  1x  1x 

**Church Path,
Greenhithe, Kent, DA9**

Wards
Helping you move forwards



Main features

- Delightful detached bungalow
- Lovely conservatory
- Driveway and garage to rear and additional garage to front
- Spend the summer days with the children in Worcester Park Garden and Saxon Park
- Ideal for Stone Crossing station as well as A2/M25 motorways

Accommodation

GROUND FLOOR

Entrance Hallway

Lounge: 14'0 x 12'8 (4.27m x 3.86m)

Kitchen: 11'9 x 8'8 (3.58m x 2.64m)

Conservatory: 10'9 x 7'7 (3.28m x 2.31m)

Bedroom 1: 13'9 x 9'8 (4.19m x 2.95m)

Bedroom 2: 10'9 x 10'0 (3.28m x 3.05m)

Bathroom: 8'4 x 6'6 (2.54m x 1.98m)

OUTSIDE

Front Garden

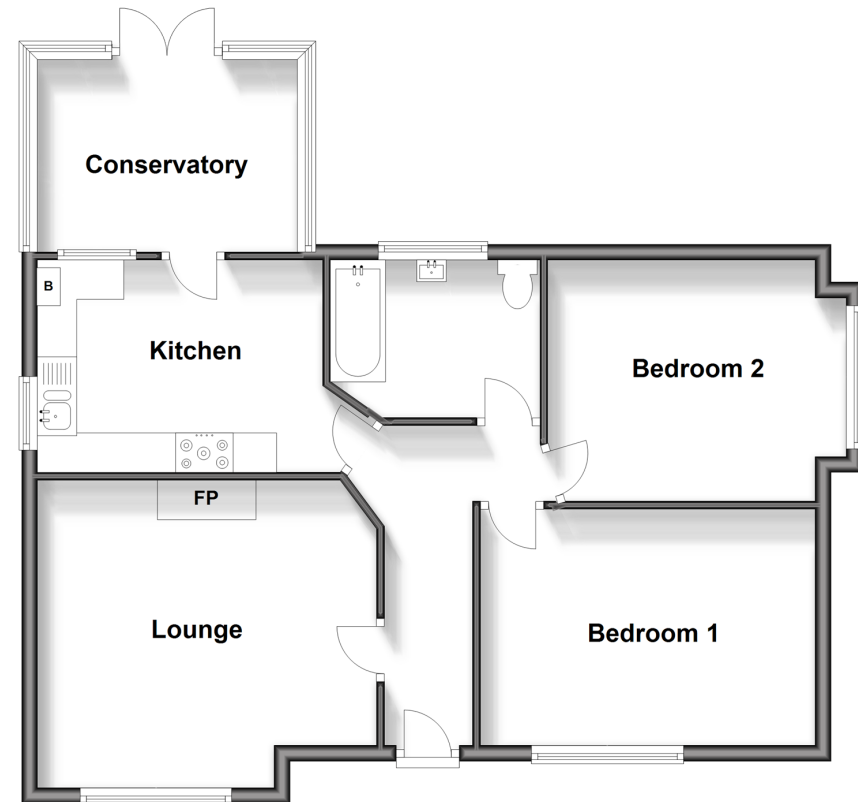
Driveway

Garage To Front

Rear Garden

Garage To Rear

Ground Floor
Approx. 71.6 sq. metres (770.2 sq. feet)



Call Dartford - 01322 288211 ■ wardsof Kent.co.uk

- If buying to let, the energy rating will need to be improved to at least 'E' rating before you can let the property
- Legal advice should be taken to verify fixtures/fittings, planning, alterations and/or lease details
- Appliances & services are untested, dimensions are approximate and floor plans are not to scale



10545590/20240605/LH/PP