



Price
£350,000

Freehold

3x  1x  1x 

**Castle Street,
Swanscombe, Kent,
DA10**

Wards
Helping you move forwards



Main features

- Modern terraced house
- Two off road parking spaces
- Rear garden with sunny aspect
- Short walk to Swanscombe and Broomfield Park recreation areas
- Excellent school catchment area and short drive to Ebbsfleet International train station

Accommodation

GROUND FLOOR

- Entrance Hallway
- Cloakroom
- Kitchen: 11'8 x 7'3 (3.56m x 2.21m)
- Lounge/Diner: 15'1 x 14'6 (4.60m x 4.42m)

FIRST FLOOR

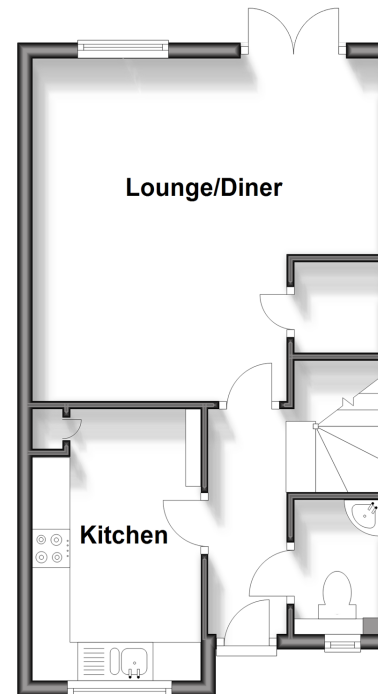
- Landing
- Bathroom: 7'0 x 6'1 (2.14m x 1.86m)
- Bedroom 1: 13'4 x 8'6 (4.07m x 2.59m)
- Bedroom 2: 13'3 x 8'0 (4.04m x 2.44m)
- Bedroom 3: 8'8 x 6'8 (2.64m x 2.03m)

OUTSIDE

- Two parking spaces
- Rear Garden

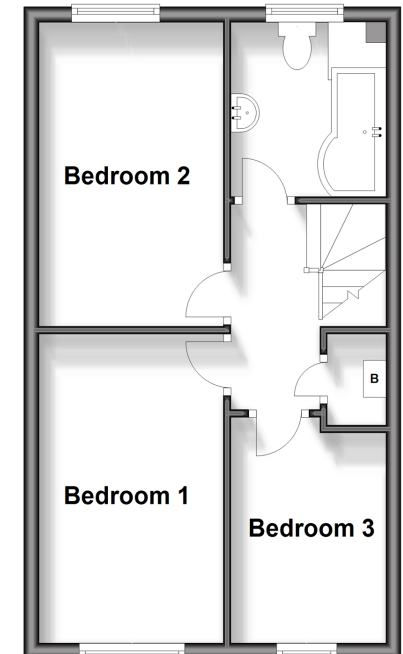
Ground Floor

Approx. 36.0 sq. metres (387.6 sq. feet)



First Floor

Approx. 37.4 sq. metres (402.1 sq. feet)



Call Dartford - 01322 288211 ■ wardsofkent.co.uk

■ Legal advice should be taken to verify fixtures/fittings, planning, alterations and/or lease details

■ Appliances & services are untested, dimensions are approximate and floor plans are not to scale



10545612/20240614/BV/PP