



Price
£575,000

Freehold

3x  1x  1x 

**Cedar Drive, Sutton At
Hone, Dartford, Kent,
DA4**

OVER 60?

Secure this property
for up to **59% less!**

Wards
Helping you move forwards



Main features

- Substantial detached bungalow
- Large plot in a cul-de-sac location
- In need of modernisation
- Semi rural location enjoying access to many local amenities and schooling
- Short drive to motorway network, Bluewater shopping centre and Ebbsfleet International

Accommodation

GROUND FLOOR

Entrance Porch

Entrance Hallway

Living Room: 19'9 x 18'10 (6.02m x 5.74m)

Kitchen: 16'5 x 12'5 (5.01m x 3.79m)

Bathroom: 8'3 x 5'4 (2.52m x 1.63m)

Bedroom 2: 12'3 x 7'3 (3.74m x 2.21m)

Bedroom 1: 12'3 x 12'3 (3.74m x 3.74m)

Bedroom 3: 10'1 x 7'3 (3.08m x 2.21m)

OUTSIDE

Front Garden

Detached Garage

Side Garden

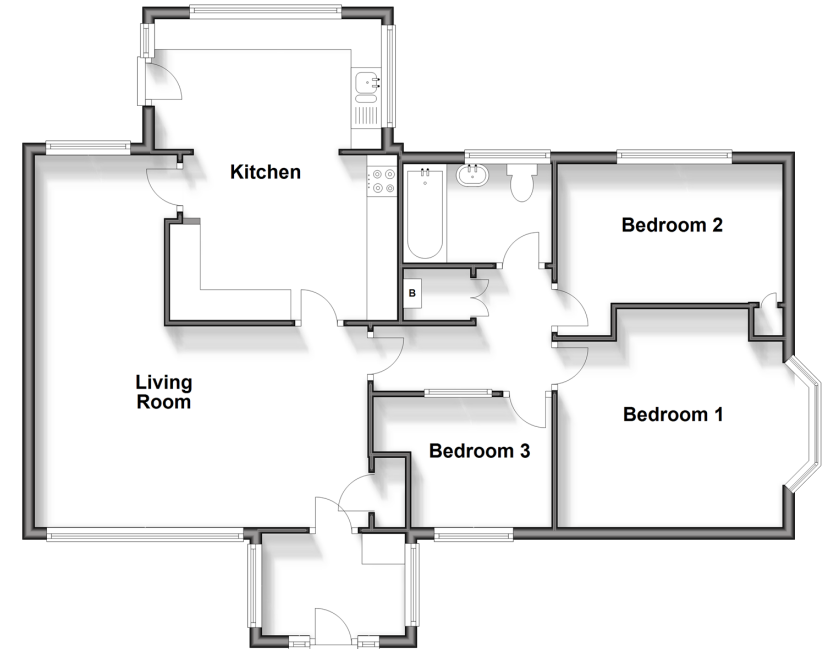
Rear Garden

Outbuilding

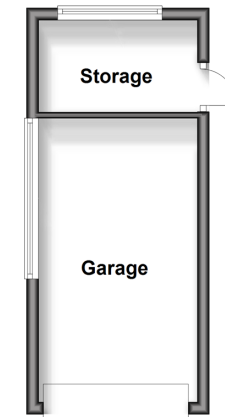
Call Dartford - 01322 288211 ■ wardsofkent.co.uk

- Legal advice should be taken to verify fixtures/fittings, planning, alterations and/or lease details
- Appliances & services are untested, dimensions are approximate and floor plans are not to scale
- Through a Homewise Home For Life Plan people aged 60+ can secure this property for up to 59% less, by purchasing a Lifetime Lease.

Ground Floor
Approx. 87.3 sq. metres (939.7 sq. feet)



Outbuilding
Approx. 16.4 sq. metres (176.6 sq. feet)



10545389/20240406/MP/PP