



Price
£500,000

Freehold

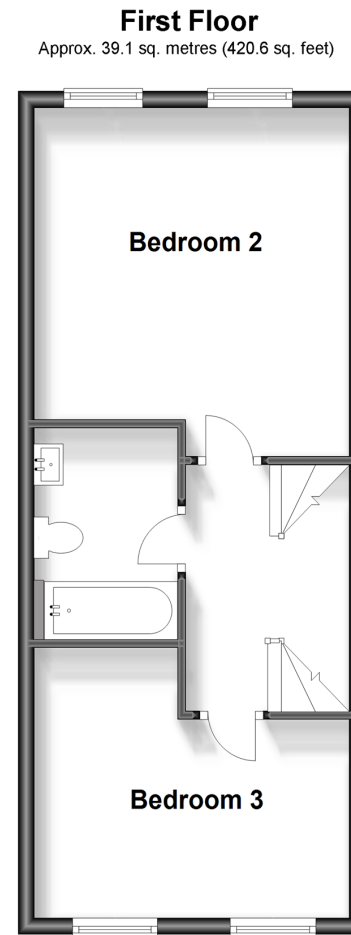
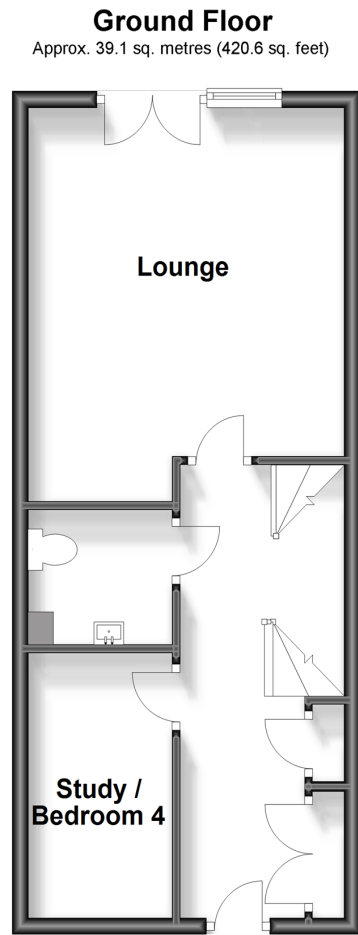
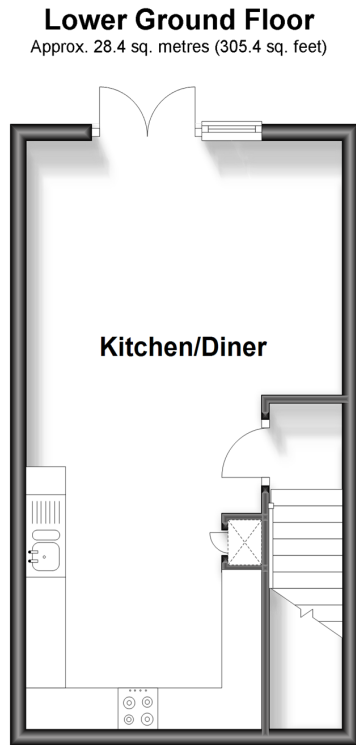
4x  2x  1x 

**Burroughs Drive,
Dartford, Kent, DA1**

OVER 60?

Secure this property
for up to **59% less!**

Wards
Helping you move forwards



Accommodation

GROUND FLOOR

Entrance Hallway
 Study/Bedroom 4: 10'7 x 5'8 (3.23m x 1.73m)
 Cloakroom: 5'10 x 5'8 (1.78m x 1.73m)
 Lounge: 15'3 x 12'9 (4.65m x 3.89m)

LOWER GROUND FLOOR

Kitchen/Diner: 23'1 (7.04m) x 12'8 (3.86m)
 narrowing to 9'6 (2.90m)

FIRST FLOOR

Landing
 Bedroom 3: 12'9 (3.89m) narrowing to 8'10 (2.69m) x 10'7 (3.23m)
 Bathroom: 8'3 x 6'2 (2.52m x 1.88m)
 Bedroom 2: 13'4 x 12'8 (4.07m x 3.86m)

SECOND FLOOR

Landing
 Bedroom 1: 19'8 x 12'9 (6.00m x 3.89m)
 Shower Room: 11'4 x 9'9 (3.46m x 2.97m)

OUTSIDE

Front Garden
 Rear Garden
 Garage En-Bloc



Main features

- Stunning contemporary semi-detached house
- Versatile accommodation over four floors
- Garage en-bloc
- Central location with easy access to town centre and Dartford station
- Excellent condition throughout with manageable rear garden



Nearest Schools

Primary Schools: Temple Hill Community Primary and Nursery School 0.7 miles, St Anselm's Catholic Primary 0.9 miles, Holy Trinity C of E Primary, Dartford 0.9 miles
Secondary Schools: Dartford Grammar School 1.3 miles, Dartford Grammar School for Girls 1.5 miles



Transport Information

Train Stations: Dartford 1.0 miles, Slade Green 1.4 miles, Purfleet 1.4 miles



Address

Burroughs Drive, Dartford, Kent, DA1



Directions

For directions to this property please contact us.



Wards
Helping you move forwards

Call Dartford Branch 01322 288211 ■ wardsofkent.co.uk



- Legal advice should be taken to verify fixtures/fittings, planning, alterations and/or lease details
- Appliances & services are untested, dimensions are approximate and floor plans are not to scale
- Through a Homewise Home For Life Plan people aged 60+ can secure this property for up to 59% less, by purchasing a Lifetime Lease.

EPC RATING	CURRENT:	POTENTIAL:
	B(86)	A(94)

10545456/20241019/CM/PP