



Price

£110,000

Leasehold

1x  1x  1x 

**Selwood Court,
Churchill Close,
Dartford, Kent, DA1**

OVER 60?

Secure this property
for up to **59% less!**

Wards
Helping you move forwards



Main features

- Top floor flat on a popular development
- Handy allocated parking space
- Plenty of storage including loft space
- Sought after two storey block
- Ideal for A2/M25 motorways as well as Dartford town centre and station

Accommodation

TOP FLOOR

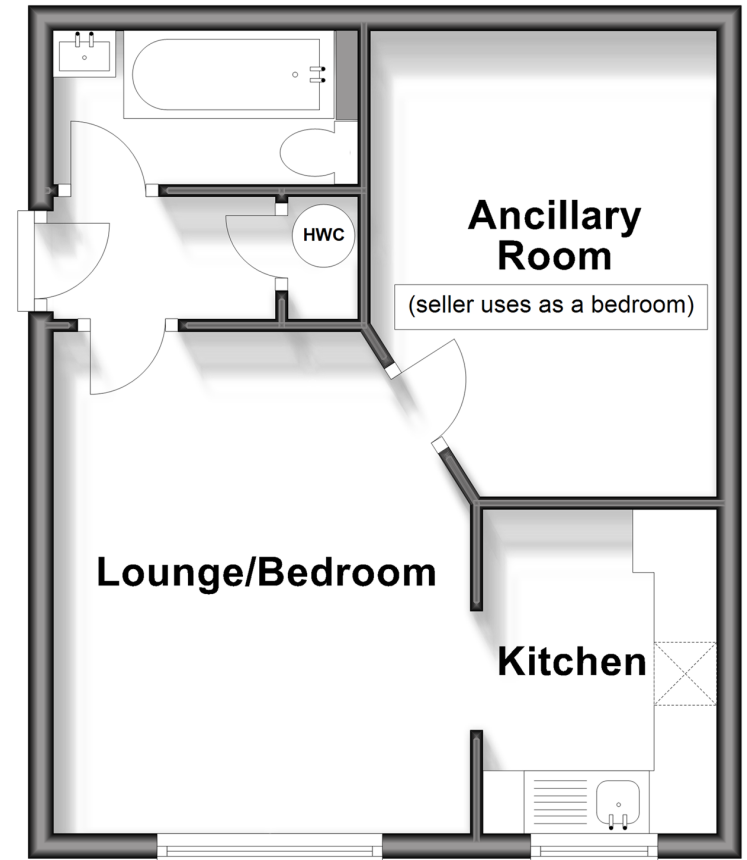
- Entrance Hallway
- Bathroom
- Ancillary Room
- Kitchen
- Lounge/Bedroom

OUTSIDE

- Allocated Parking Space
- Communal Garden

Top Floor

Approx. 33.8 sq. metres (364.0 sq. feet)



Call Dartford - 01322 288211 ■ wardsofkent.co.uk

- Legal advice should be taken to verify fixtures/fittings, planning, alterations and/or lease details
- Appliances & services are untested, dimensions are approximate and floor plans are not to scale
- Through a Homewise Home For Life Plan people aged 60+ can secure this property for up to 59% less, by purchasing a Lifetime Lease.



10545494/20240917/RM/LH