



Price
£525,000

Freehold

3x  1x  1x 

**Baker Crescent, Trinity
Fields, Dartford, Kent,
DA1**

OVER 60?

Secure this property
for up to **59% less!**

Wards
Helping you move forwards



Main features

- Lovely end of terrace house, in superb condition throughout
- Useful home office space
- Excellent school catchment area and a short walk to Dartford town centre and train station
- En-Suite to main bedroom
- Low maintenance gardens & 2 allocated parking spaces

Accommodation

GROUND FLOOR

- Entrance Hall
- Lounge: 17'3 x 12'1 (5.26m x 3.69m)
- Cloakroom
- Kitchen: 17'2 x 9'5 (5.24m x 2.87m)
- Conservatory/Dining Area: 6'2 x 5'4 (1.88m x 1.63m)

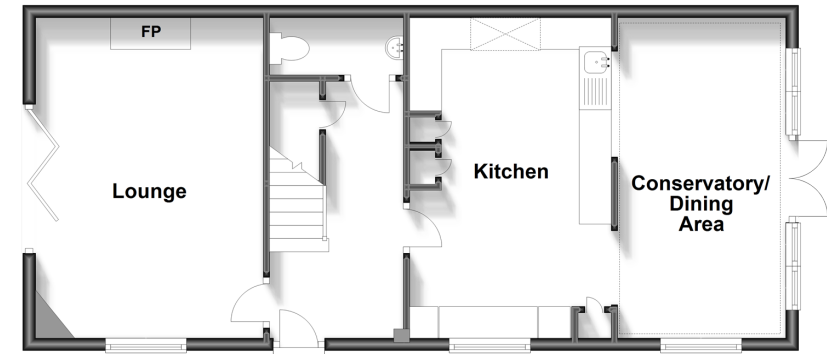
FIRST FLOOR

- Landing
- Bedroom 1: 12'1 x 10'6 up to fitted wardrobes (3.69m x 3.20m)
- En-Suite Shower Room: 12'0 x 3'9 (3.66m x 1.14m)
- Bathroom
- Bedroom 2: 10'2 x 9'4 (3.10m x 2.85m)
- Bedroom 3: 9'5 x 6'6 (2.87m x 1.98m)

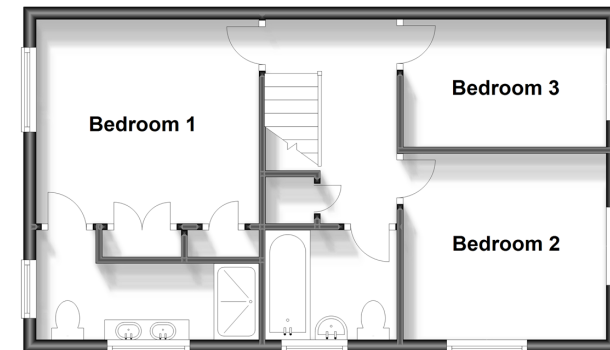
OUTSIDE

- Front Garden
- Side Garden
- Rear Garden
- 2 x Allocated Parking Spaces

Ground Floor
Approx. 59.4 sq. metres (639.3 sq. feet)



First Floor
Approx. 45.1 sq. metres (485.7 sq. feet)



Call Dartford - 01322 288211 ■ wardsofkent.co.uk

- Legal advice should be taken to verify fixtures/fittings, planning, alterations and/or lease details
- Appliances & services are untested, dimensions are approximate and floor plans are not to scale
- Through a Homewise Home For Life Plan people aged 60+ can secure this property for up to 59% less, by purchasing a Lifetime Lease.



10534397/20231106/MP/PP