



Guide Price
£400,000

Freehold

4x  1x  1x 

**Dane Hill Row, Margate,
Kent, CT9**

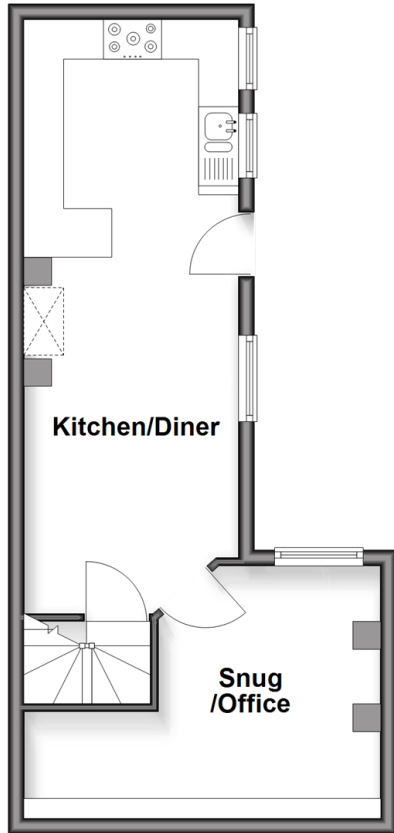
OVER 60?

Secure this property
for up to **59% less!**

Wards
Helping you move forwards

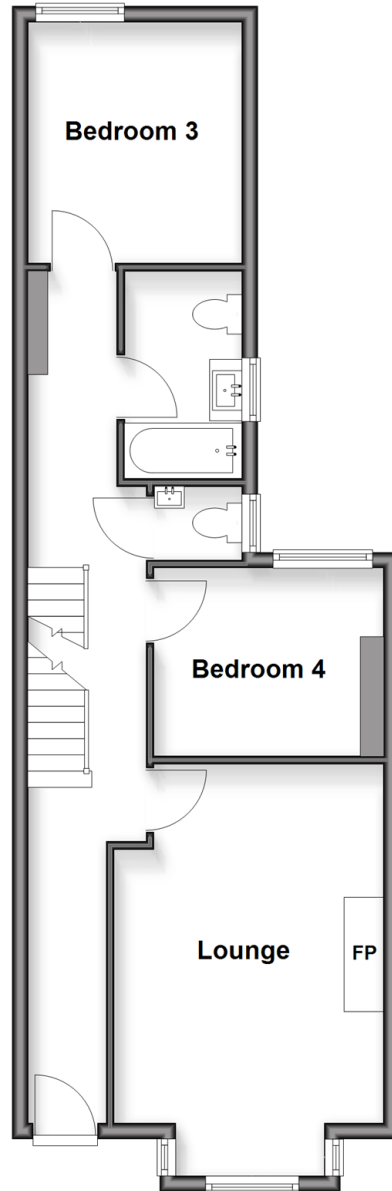
Lower Ground Floor

Approx. 32.9 sq. metres (354.2 sq. feet)



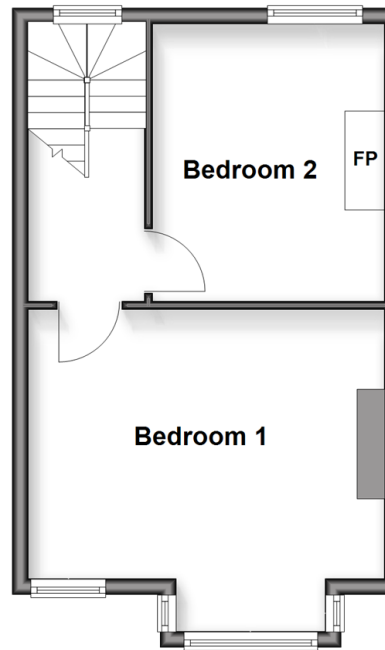
Ground Floor

Approx. 51.3 sq. metres (552.1 sq. feet)



First Floor

Approx. 32.7 sq. metres (351.9 sq. feet)



Accommodation

GROUND FLOOR

Entrance Hallway

Lounge: 17'5 x 11'1 (5.31m x 3.38m)

Bedroom 4: 9'7 x 7'9 (2.92m x 2.36m)

Bedroom 3: 10'0 x 9'0 (3.05m x 2.75m)

Bathroom

Separate Toilet

LOWER GROUND FLOOR

Snug/Office: 11'2 x 9'5 (3.41m x 2.87m)

Kitchen/Diner: 25'4 x 9'0 (7.73m x 2.75m)

FIRST FLOOR

Landing

Bedroom 1: 14'3 x 13'1 (4.35m x 3.99m)

Bedroom 2: 11'5 x 9'7 (3.48m x 2.92m)

OUTSIDE

Front Garden

Rear Garden



Main features

- Period home over three floors
- Oozing with character and features
- Kitchen/diner ideal for entertaining
- Pretty and sunny rear garden
- The log burner in the lounge will keep you warm in the cooler months
- The location is fantastic to reach everywhere by foot if you don't want to use the car



Nearest Schools

Primary Schools: Margate, Holy Trinity and St John's C of E Primary 0.7 miles, Salmestone Primary 0.9 miles, Northdown Primary 1.0 miles

Secondary Schools: Hartsdown Technology College 1.6



Transport Information

Train Stations: Margate 1.0 miles, Westgate-on-Sea 2.6 miles, Broadstairs 3.4 miles



Address

Dane Hill Row, Margate, Kent, CT9



Directions

For directions to this property please contact us.



Wards
Helping you move forwards

Call Cliftonville Branch 01843 227447 ■ wardsofkent.co.uk



- A private rental licensing scheme applies to some properties in this area, please contact us before proceeding
- Appliances & services are untested, dimensions are approximate and floor plans are not to scale

- Legal advice should be taken to verify fixtures/fittings, planning, alterations and/or lease details
- Through a Homewise Home For Life Plan people aged 60+ can secure this property for up to 50% less, by purchasing a Lifetime Lease.



15111723/20250927/DM/VH