



OVER 60?

Secure this property
for up to **59% less!**

Guide Price
£400,000

Freehold

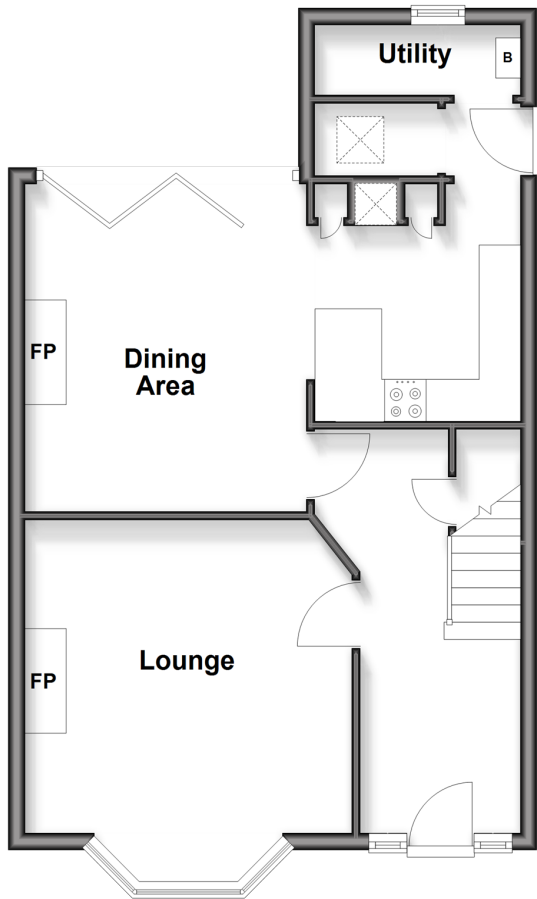
5x  2x  1x 

**The Ridgeway,
Cliftonville, Margate,
Kent, CT9**

Wards
Helping you move forwards

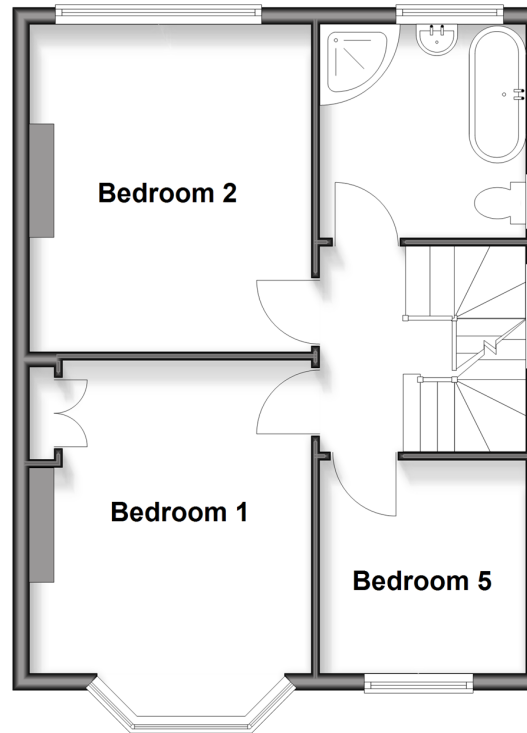
Ground Floor

Approx. 51.6 sq. metres (555.1 sq. feet)



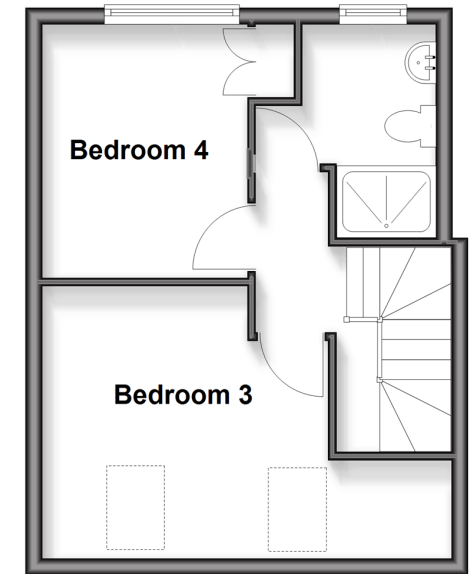
First Floor

Approx. 47.1 sq. metres (506.6 sq. feet)



Second Floor

Approx. 31.1 sq. metres (335.0 sq. feet)



Accommodation

GROUND FLOOR

Entrance Hall

Lounge: 12'1 x 12'0 (3.69m x 3.66m)

Dining Area: 12'1 x 11'0 (3.69m x 3.36m)

Kitchen: 9'0 x 7'1 (2.75m x 2.16m)

FIRST FLOOR

Landing

Bedroom 2: 13'0 x 11'0 (3.97m x 3.36m)

Bathroom: 8'0 x 7'1 (2.44m x 2.16m)

Bedroom 1: 14'0 x 11'0 (4.27m x 3.36m)

Bedroom 5: 8'1 x 7'1 (2.47m x 2.16m)

SECOND FLOOR

Landing

Bedroom 3: 13'0 x 10'1 (3.97m x 3.08m)

Bedroom 4: 9'1 x 9'1 (2.77m x 2.77m)

Shower Room: 8'0 x 6'1 (2.44m x 1.86m)

OUTSIDE

Front Garden

Off Road Parking

Rear Garden



Main features

- Well presented throughout and ready to move straight in
- situated in a quiet cul-de-sac
- Separate dining area with doors opening out to sunny rear garden
- Loft conversion done to a high standard
- Off road parking
- Great opportunity for growing families
- Close to local shops and schools



Nearest Schools

Primary Schools: Cliftonville Primary 0.3 miles, Northdown Primary 0.3 miles, Drapers Mills Primary 0.4 miles

Secondary Schools: Laleham Gap School 0.1 miles, St Anthony's School 0.2 miles, Royal School for Deaf



Transport Information

Train Stations: Margate 1.2 miles, Broadstairs 2.0 miles, Westgate-on-Sea 2.7 miles



Address

The Ridgeway, Cliftonville, Margate, Kent, CT9



Directions

For directions to this property please contact us.



Wards
Helping you move forwards

Call Cliftonville Branch 01843 227447 ■ wardsofkent.co.uk



- A private rental licensing scheme applies to some properties in this area, please contact us before proceeding
- Appliances & services are untested, dimensions are approximate and floor plans are not to scale

- Legal advice should be taken to verify fixtures/fittings, planning, alterations and/or lease details
- Through a Homewise Home For Life Plan people aged 60+ can secure this property for up to 50% less, by purchasing a Lifetime Lease.



15106299/20250822/MC/NF