



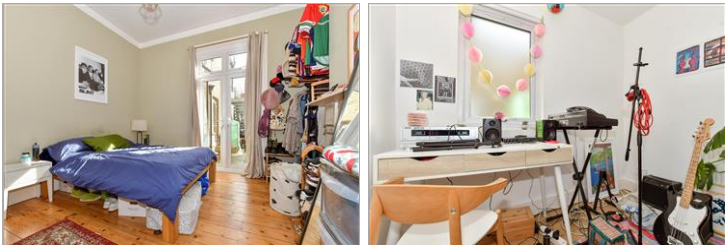
Guide Price
£210,000

**Share of
Freehold**

2x  1x  1x 

**Warwick Road,
Cliftonville, Margate,
Kent, CT9**

Wards
Helping you move forwards



Main features

- Excellent first time purchase
- Highly sought after location
- Handy for shops, beaches and transport links
- High ceilings and spacious rooms
- You even have your own private outside space

Accommodation

SPLIT LEVEL GROUND FLOOR

Hallway

Lounge: 15'0 x 13'2 (4.58m x 4.02m)

Bedroom 1: 13'2 x 13'1 (4.02m x 3.99m)

Kitchen: 11'4 x 10'0 (3.46m x 3.05m)

Bedroom 2: 8'4 x 7'1 (2.54m x 2.16m)

Bathroom

BASEMENT

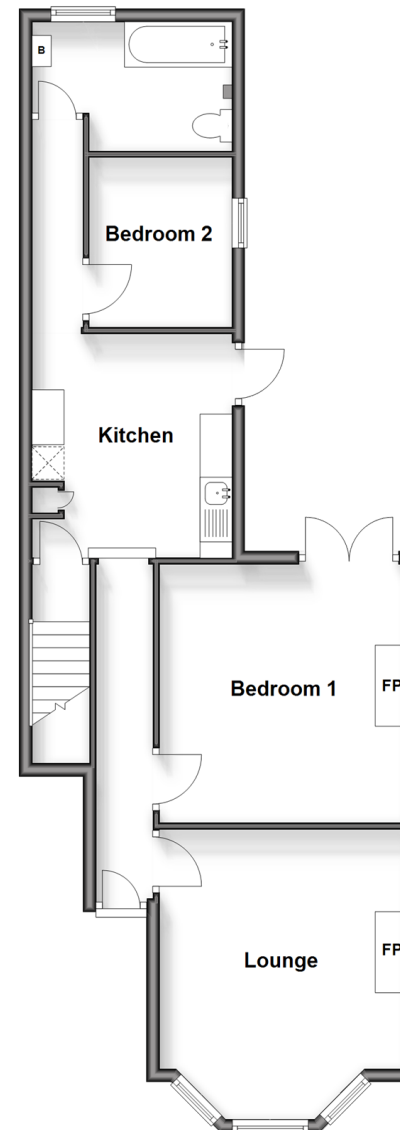
Cellar

OUTSIDE

Rear courtyard garden

Split Level Ground Floor

Approx. 66.1 sq. metres (711.8 sq. feet)



Basement

Approx. 8.6 sq. metres (93.1 sq. feet)



Call Cliftonville - 01843 227447 ■ wardsofkent.co.uk

- A private rental licensing scheme applies to some properties in this area, please contact us before proceeding
- Legal advice should be taken to verify fixtures/fittings, planning, alterations and/or lease details
- Appliances & services are untested, dimensions are approximate and floor plans are not to scale



15111471/20250521/VH/VH