



OVER 60?

Secure this property
for up to **59% less!**

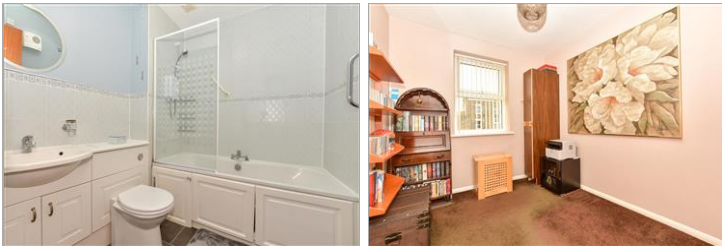
Guide Price
£145,000

Leasehold

2x  1x  1x 

**Edgar Road, Cliftonville,
Margate, Kent, CT9**

Wards
Helping you move forwards



Main features

- Third floor apartment
- Generous size accommodation throughout
- Allocated parking to the rear
- Secure entry
- Lift access to all floors
- Walking distance to sandy beaches, shops and restaurants

Accommodation

THIRD FLOOR

Hallway

Lounge/Diner: 19'0 x 18'5 (5.80m x 5.62m)

Bedroom 1: 14'2 x 8'3 (4.32m x 2.52m)

Bedroom 2: 10'0 x 7'10 (3.05m x 2.39m)

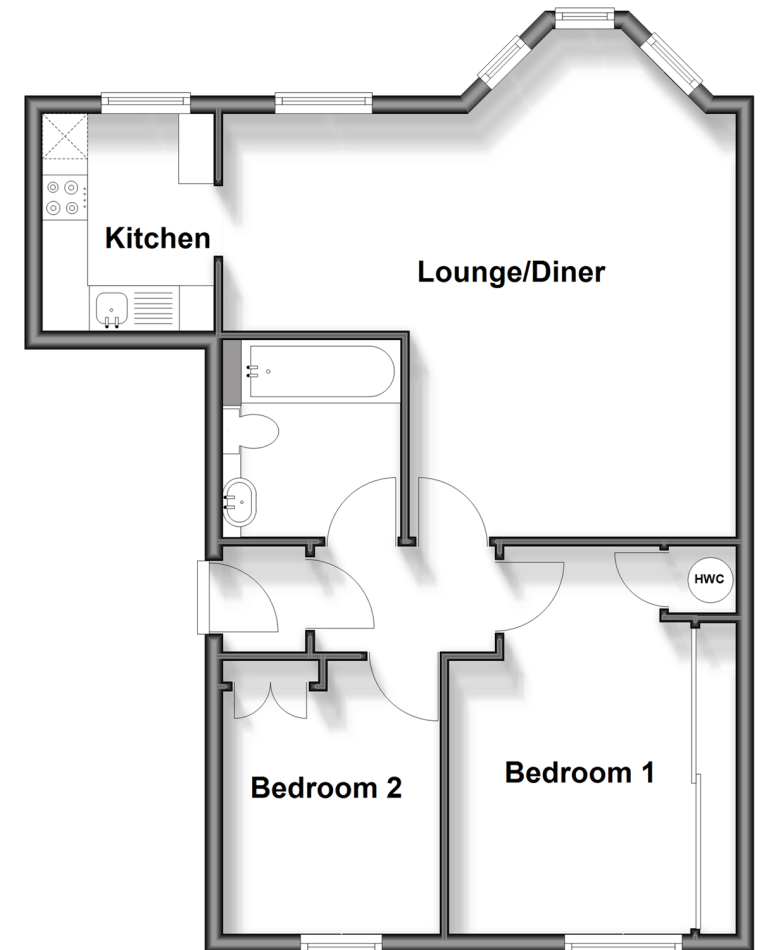
Bathroom: 7'1 x 6'5 (2.16m x 1.96m)

OUTSIDE

Allocated Parking

Third Floor

Approx. 58.2 sq. metres (626.2 sq. feet)



Call Cliftonville - 01843 227447 ■ wardsofkent.co.uk

- A private rental licensing scheme applies to some properties in this area, please contact us before proceeding
- Legal advice should be taken to verify fixtures/fittings, planning, alterations and/or lease details
- Appliances & services are untested, dimensions are approximate and floor plans are not to scale
- Through a Homewise Home For Life Plan people aged 60+ can secure this property for up to 59% less, by purchasing a Lifetime Lease.



15111386/20250621/DM/NF