



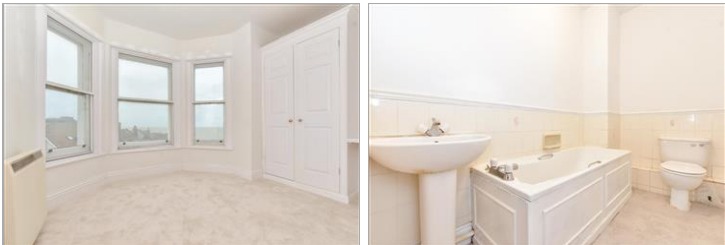
Price
£165,000

Leasehold

1x  1x  1x 

**Royal Crescent,
Margate, Kent, CT9**

Wards
Helping you move forwards



Main features

- Second floor apartment
- Amazing panoramic sea views
- Chain free in arguably the best position in this building
- Short stroll to Margate main sands and Westbrook sandy beach
- Margate mainline train station and Dreamland close by

Accommodation

SECOND FLOOR

Hallway

Lounge: 14'7 x 12'7 (4.45m x 3.84m)

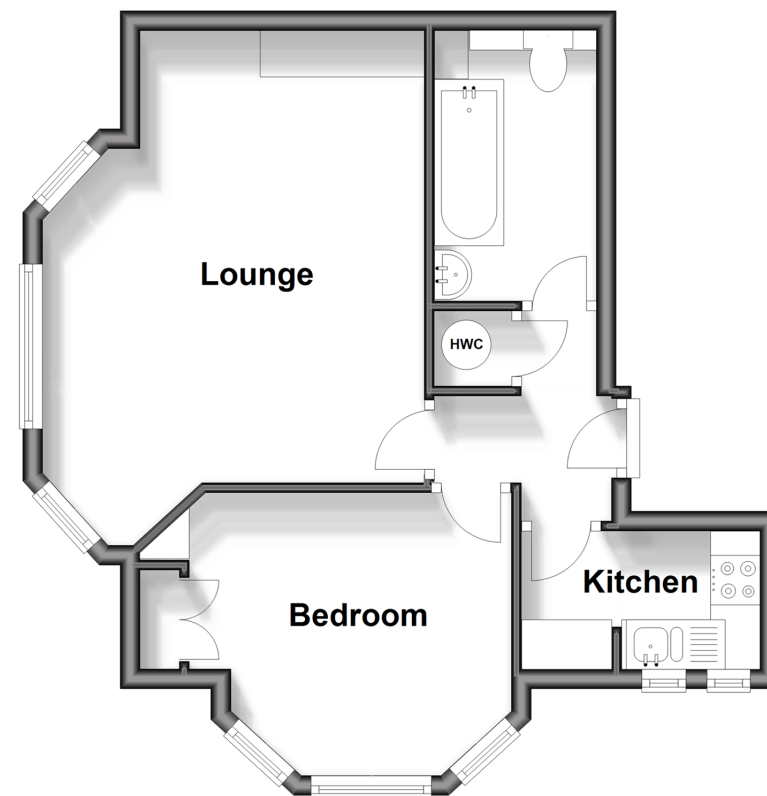
Bedroom : 12'4 x 9'1 (3.76m x 2.77m)

Bathroom

Kitchen: 7'8 x 4'3 (2.34m x 1.30m)

Second Floor

Approx. 38.4 sq. metres (413.1 sq. feet)



Call Cliftonville - 01843 227447 ■ wardsofkent.co.uk

- A private rental licensing scheme applies to some properties in this area, please contact us before proceeding
- Legal advice should be taken to verify fixtures/fittings, planning, alterations and/or lease details
- Appliances & services are untested, dimensions are approximate and floor plans are not to scale



15111352/20241120/DM/VH