



Guide Price
£180,000

Leasehold

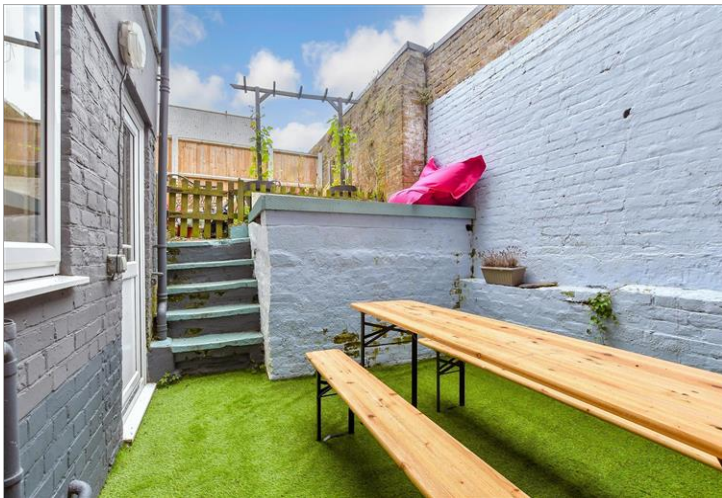
1x  1x  1x 

**Godwin Road,
Cliftonville, Margate,
Kent, CT9**

OVER 60?

Secure this property
for up to **59% less!**

Wards
Helping you move forwards



Main features

- No onward chain
- Beautifully refurbished apartment
- Sought after location in central Cliftonville
- Enjoy long sunny days in your private courtyard
- Lucky enough to be buying this as a second home? you can holiday let it when you are not using it

Accommodation

SPLIT LEVEL LOWER GROUND FLOOR

Hallway

Lounge: 16'0 x 16'0 (4.88m x 4.88m)

Bedroom : 12'0 x 10'0 (3.66m x 3.05m)

Bathroom : 8'0 x 5'0 (2.44m x 1.53m)

Kitchen: 12'0 x 9'0 (3.66m x 2.75m)

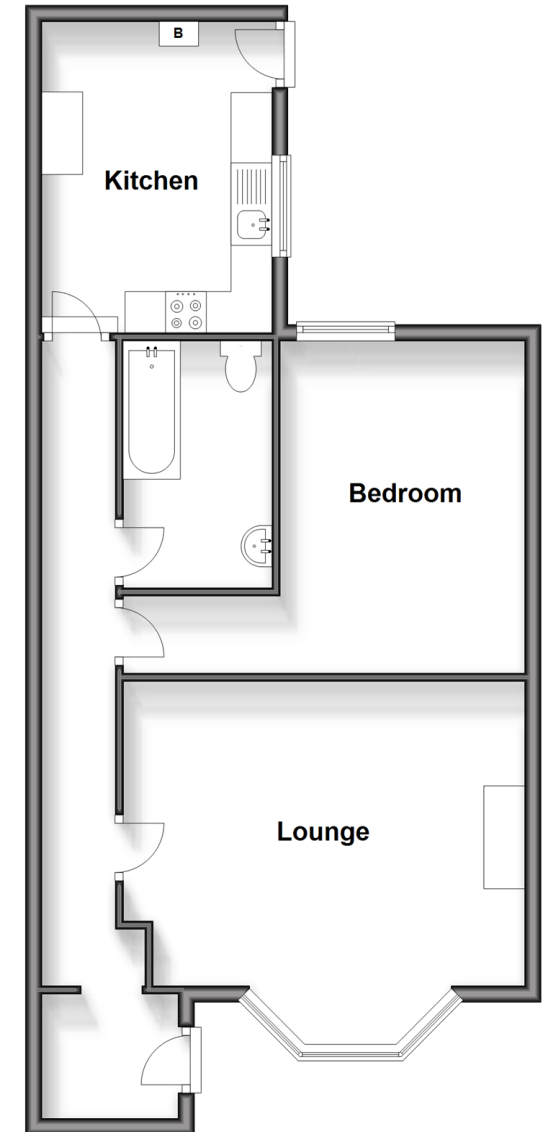
OUTSIDE

Courtyard Rear Garden

Courtyard Front Garden

Split Level Lower Ground Floor

Approx. 60.4 sq. metres (649.6 sq. feet)



Call Cliftonville - 01843 227447 ■ wardsofkent.co.uk

- A private rental licensing scheme applies to some properties in this area, please contact us before proceeding
- Legal advice should be taken to verify fixtures/fittings, planning, alterations and/or lease details
- Appliances & services are untested, dimensions are approximate and floor plans are not to scale
- Through a Homewise Home For Life Plan people aged 60+ can secure this property for up to 59% less, by purchasing a Lifetime Lease.



15110576/20241121/VH/VH