



Price
£600,000

Freehold

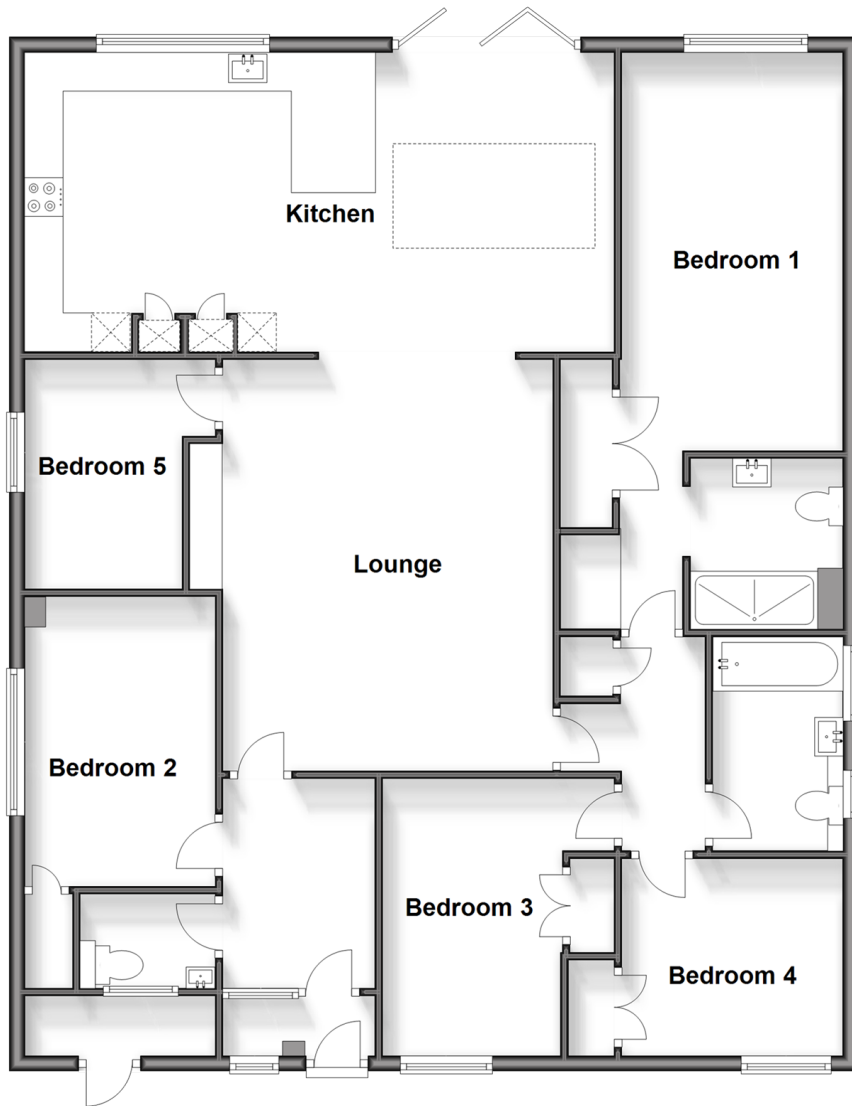
5x  2x  1x 

**Springfield Road,
Cliftonville, Margate,
Kent, CT9**

Wards
Helping you move forwards

Ground Floor

Approx. 137.8 sq. metres (1483.6 sq. feet)



Accommodation

GROUND FLOOR

Entrance Porch

Hallway

Cloakroom

Bedroom 3: 9'6 x 9'0 (2.90m x 2.75m)

Bedroom 4: 11'9 x 7'9 (3.58m x 2.36m)

Bedroom 2: 9'8 x 7'4 (2.95m x 2.24m)

Bedroom 5: 11'9 x 8'6 (3.58m x 2.59m)

Lounge: 17'8 x 14'1 (5.39m x 4.30m)

Kitchen: 24'9 x 11'9 (7.55m x 3.58m)

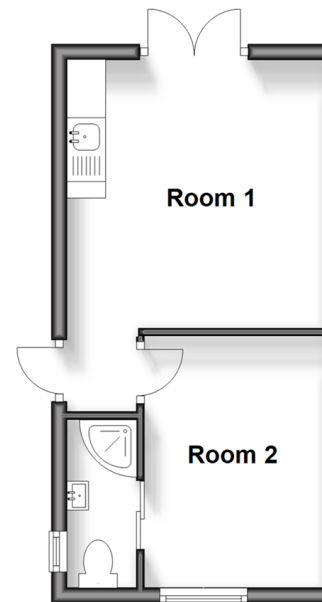
Bathroom

Bedroom 1: 16'8 x 9'5 (5.08m x 2.87m)

En-suite Shower Room

Outbuilding

Approx. 22.8 sq. metres (245.2 sq. feet)



OUTBUILDING

Room 1: 11'5 x 11'0 (3.48m x 3.36m)

Room 2: 10'3 x 7'7 (3.13m x 2.31m)

OUTSIDE

Front Garden

Off Road Parking

Rear Garden



Main features

- Stunning, completely re-modelled and ready to move into
- Bedroom 5 is conveniently off the lounge
- Highly desirable location
- On such a wide plot let your imagination run wild with the versatility of this
- Lovely walks along the coast and great sandy beaches for the family to enjoy



Nearest Schools

Primary Schools: Palm Bay Primary 0.3 miles, Cliftonville Primary 1.0 miles, Northdown Primary 1.4 miles

Secondary Schools: St Anthony's School 1.3 miles, Laleham Gap School 1.4 miles

Transport Information

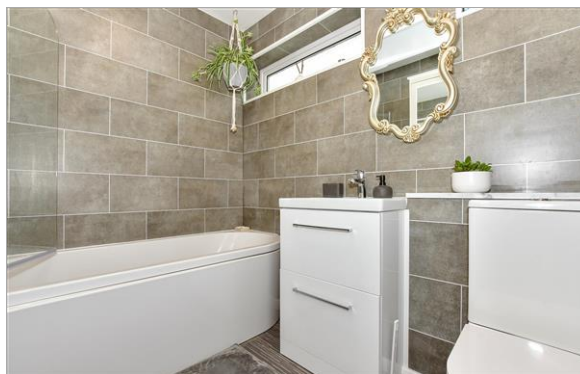
Train Stations: Margate 2.6 miles, Broadstairs 3.0 miles, Westgate-on-Sea 3.7 miles

Address

Springfield Road, Cliftonville, Margate, Kent, CT9

Directions

For directions to this property please contact us.





Wards
Helping you move forwards

Call Cliftonville Branch 01843 227447 ■ wardsofkent.co.uk



■ A private rental licensing scheme applies to some properties in this area, please contact us before proceeding
■ Appliances & services are untested, dimensions are approximate and floor plans are not to scale

■ Legal advice should be taken to verify fixtures/fittings, planning, alterations and/or lease details



15111165/20240502/DM/VH