



Guide Price
£550,000

Freehold

3x  2x  1x 

**St. Peter's Road,
Margate, Kent, CT9**

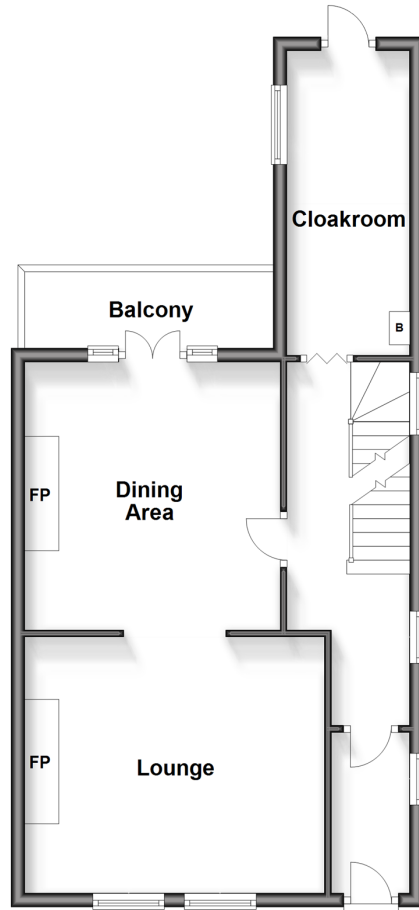
OVER 60?

Secure this property
for up to **59% less!**

Wards
Helping you move forwards

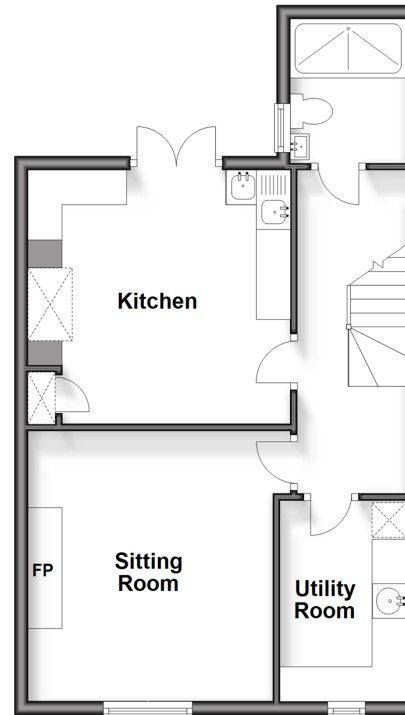
Upper Ground Floor

Approx. 51.4 sq. metres (553.5 sq. feet)



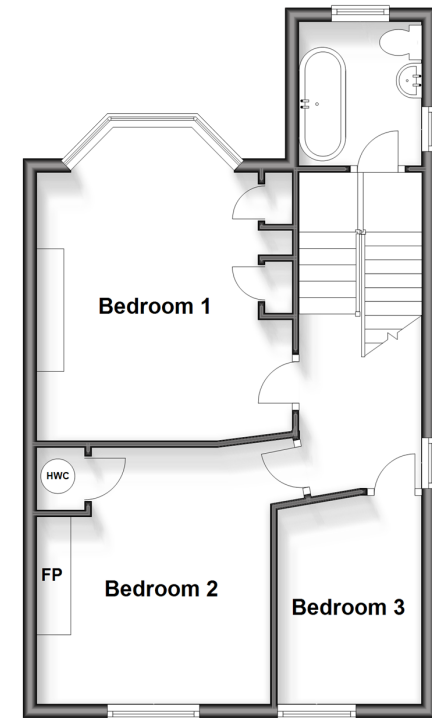
Lower Ground Floor

Approx. 46.3 sq. metres (498.0 sq. feet)



First Floor

Approx. 47.6 sq. metres (512.6 sq. feet)



Accommodation

UPPER GROUND FLOOR

Entrance Porch

Hallway

Lounge: 13'2 x 12'2 (4.02m x 3.71m)

Dining Area: 13'1 x 12'3 (3.99m x 3.74m)

Balcony

Cloakroom : 15'7 x 15'0 (4.75m x 4.58m)

LOWER GROUND FLOOR

Kitchen: 12'7 x 12'5 (3.84m x 3.79m)

Sitting Room: 12'8 x 11'8 (3.86m x 3.56m)

Shower Room

Utility Room: 9'4 x 6'4 (2.85m x 1.93m)

FIRST FLOOR

Landing

Bathroom

Bedroom 1: 12'7 x 12'6 (3.84m x 3.81m)

Bedroom 2: 12'2 x 10'3 (3.71m x 3.13m)

Bedroom 3: 9'9 x 7'0 (2.97m x 2.14m)

OUTSIDE

Front Garden

Off Road Parking

Rear Garden



Main features

- This period home with masses of features will bring a huge smile to yourself, family and guests
- Plenty of space for entertaining
- Bespoke detailing throughout makes this home a real stand out
- Have fun with the original and working servant bells
- Lots of parking and a stunning rear garden with "his and hers" studio/man caves



Nearest Schools

Primary Schools: Drapers Mills Primary 0.4 miles, Salmestone Primary 0.5 miles, Margate, Holy Trinity and St John's C of E Primary 0.6 miles

Secondary Schools: Laleham Gap School 1.0 miles,



Transport Information

Train Stations: Margate 1.0 miles, Westgate-on-Sea 2.7 miles, Broadstairs 2.8 miles



Address

St. Peter's Road, Margate, Kent, CT9



Directions

For directions to this property please contact us.



Wards
Helping you move forwards

Call Cliftonville Branch 01843 227447 ■ wardsofkent.co.uk



- A private rental licensing scheme applies to some properties in this area, please contact us before proceeding
- Appliances & services are untested, dimensions are approximate and floor plans are not to scale

- Legal advice should be taken to verify fixtures/fittings, planning, alterations and/or lease details
- Through a Homewise Home For Life Plan people aged 60+ can secure this property for up to 59% less, by purchasing a Lifetime Lease.



10219107/20240514/VH/VH